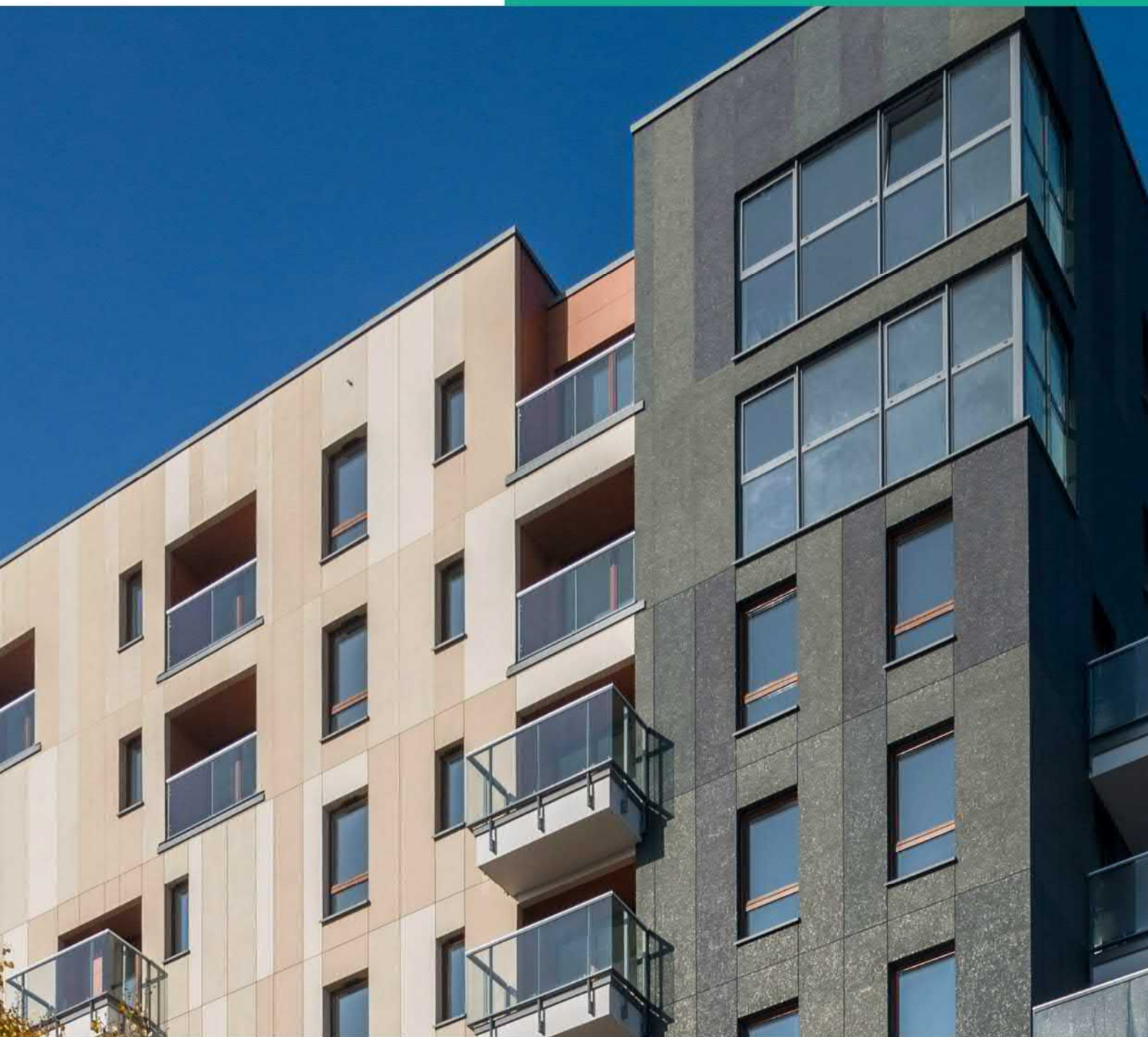




# Standard Detail Drawings

Roxsulation Pro on SFS



### Table of Contents

| Description                                | Drawing number | Revision |
|--|----------------|----------|
| System build-up                            | RPS-001        | 0        |
| Adhesive application                       | RPS-002        | 0        |
| Board layout                               | RPS-003        | 0        |
| Mesh application                           | RPS-004        | 0        |
| Fixing application – Stage 1               | RPS-005a       | 0        |
| Fixing application – Stage 2               | RPS-005b       | 0        |
| Fixing application – Complete installation | RPS-005c       | 0        |
| Fully insulated plinth below DPC           | RPS-006        | 0        |
| Window reveal with frameseal bead          | RPS-007a       | 0        |
| Window reveal with compressible seal       | RPS-007b       | 0        |
| Window reveal with backer rod              | RPS-007c       | 0        |
| Window head with frameseal bead            | RPS-008a       | 0        |
| Window head with compressible seal         | RPS-008b       | 0        |
| Window head with backer rod                | RPS-008c       | 0        |
| Window cill                                | RPS-009        | 0        |
| Eaves detail                               | RPS-010        | 0        |
| Movement joint – compressible seal         | RPS-011a       | 0        |
| Movement joint – backer rod & seal         | RPS-011b       | 0        |
| Movement joint – movement joint profile    | RPS-011c       | 0        |
| Internal corner detail                     | RPS-012        | 0        |
| Flue detail                                | RPS-013        | 0        |
| Ancillary fixings                          | RPS-014        | 0        |
| Utility /service box                       | RPS-015        | 0        |

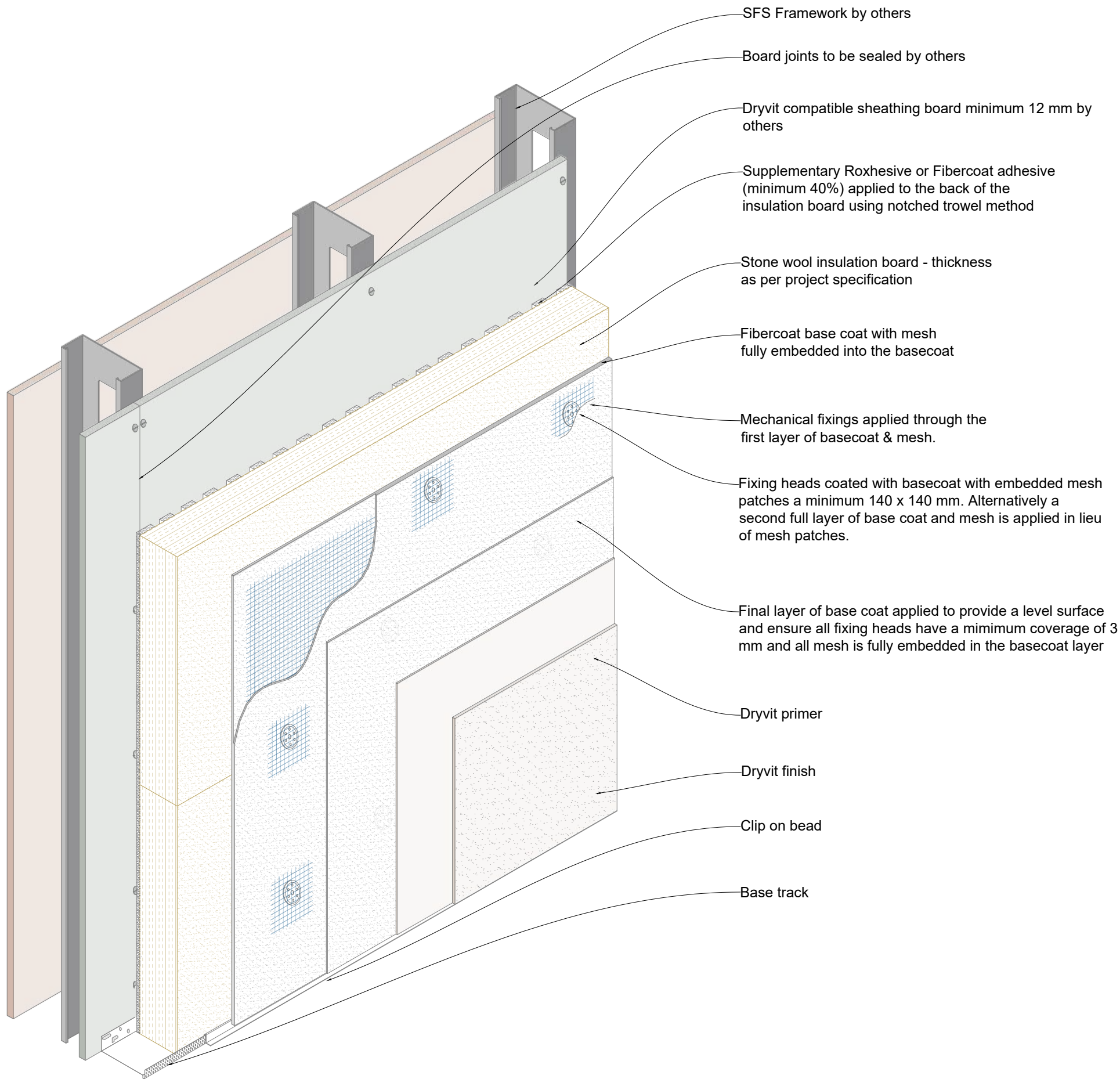
Tremco CPG UK Ltd makes no representation regarding conformity of its suggestions to model building codes, engineering criteria, specific application details or project locations. All components indicated in the illustrations, as well as other that may be required for the integrity of the system shall be designed, detailed and engineered by a representative of the architect, owner or contractor to be in conformance with model codes, architectural and engineering requirements pertaining to specific building projects.

Tremco CPG UK Ltd makes no warranty, expressed or implied, as to the architectural design, engineering or workmanship of projects utilising Dryvit systems or products.

The liabilities of Tremco CPG UK Ltd shall be as stated in the standard warranty. Contact Tremco CPG UK Ltd for a full and complete copy of this warranty.

#### DISCLAIMER

*Information contained in this document conforms to the standard detail requirements for a Dryvit EWI System as of the date of publication of this document and is presented in good faith. Tremco CPG UK Ltd. assumes no liability, expressed or implied, as to the architecture, engineering, or workmanship of any project. To ensure that you are using the latest, most complete information, contact Tremco CPG UK Ltd.*



General Notes

The architecture, engineering and design of the project using the Dryvit products is the responsibility of the project's design professional. All systems must comply with National Building Regulations and Standards.  
This detail is for general information and guidance only and Tremco CPG UK Ltd specifically disclaims any liability for the use of this detail and for the architecture, design, engineering of workmanship of any project.  
The project design professional determines, in its sole discretion, whether this detail or a functionally equivalent alternative is best suited for the project. Use of a functionally equivalent detail does not violate Tremco CPG UK's warranty.  
These details are subject to change without notice. Please contact Tremco CPG UK to ensure you have the most recent version.



System  
**Roxsulation Pro**

Project  
**Standard Detail Drawing**

Title  
**System build up**

Date  
**Nov 2021**

Drg no  
**RPS-001**

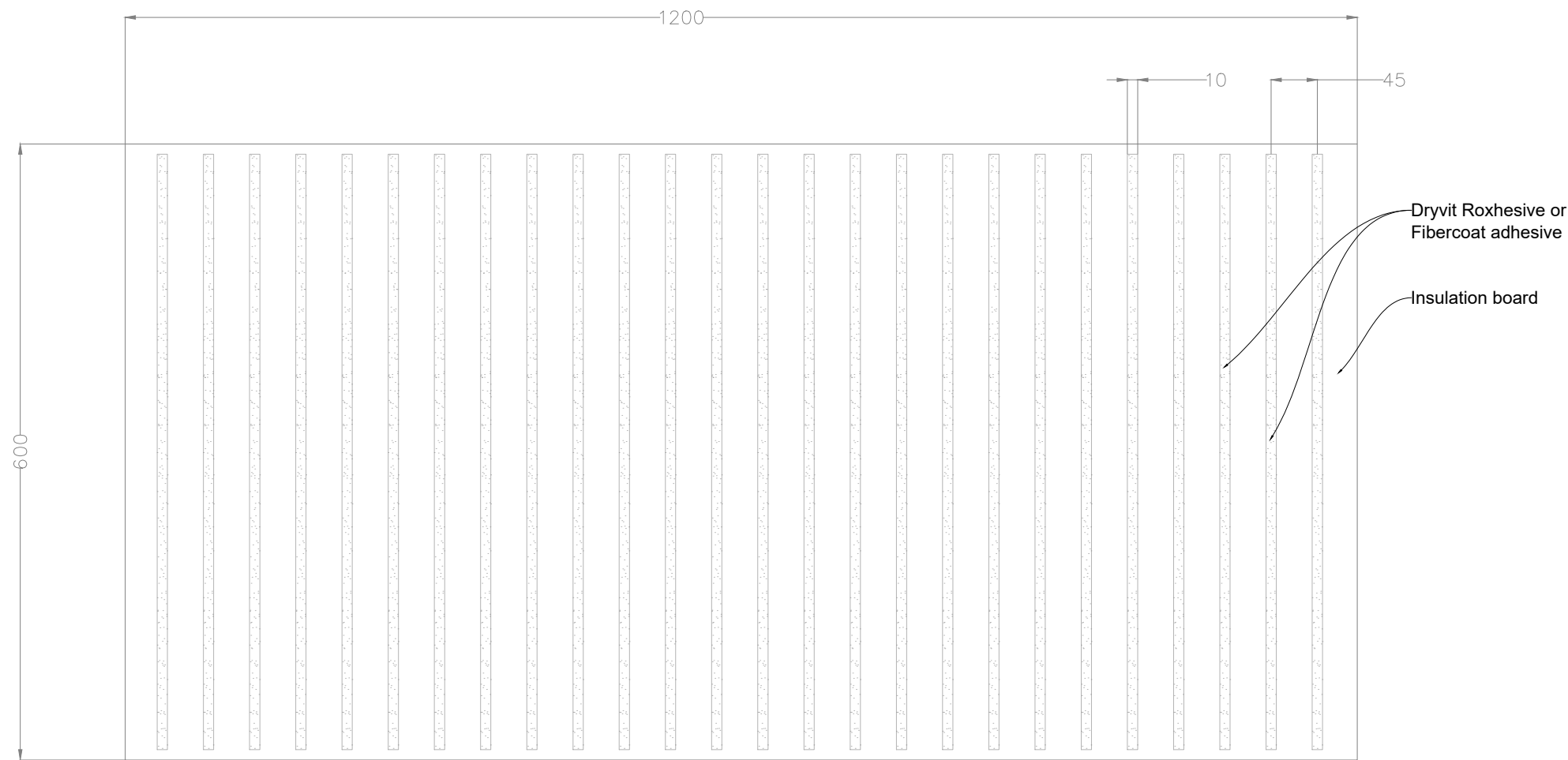
Scale  
**NTS**

Drawn by  
**KM**



Tremco CPG UK Ltd,  
Coupland Road,  
Hindley Green,  
Wigan, Lancs. WN2 4HP  
[www.cpg-europe.com](http://www.cpg-europe.com)





Application method - Notched trowel

Traditionally used for application to sheathing boards

Adhesive applied with notched trowel with 10 mm wide & 13 mm deep notch spaced at 45 mm centres. The adhesive shall be applied so that the ribbons run vertically when the board is placed on to the wall.

This method is only for use on a substrate with out of plane tolerance over 3 metres of 0 mm to +/- 3 mm - (Total 6 mm)

General Notes

The architecture, engineering and design of the project using the Dryvit products is the responsibility of the project's design professional. All systems must comply with National Building Regulations and Standards.  
This detail is for general information and guidance only and Tremco CPG UK Ltd specifically disclaims any liability for the use of this detail and for the architecture, design, engineering of workmanship of any project.  
The project design professional determines, in its sole discretion, whether this detail or a functionally equivalent alternative is best suited for the project. Use of a functionally equivalent detail does not violate Tremco CPG UK's warranty.  
These details are subject to change without notice. Please contact Tremco CPG UK to ensure you have the most recent version.



System  
**Roxsulation Pro**

Project  
**Standard Detail Drawing**

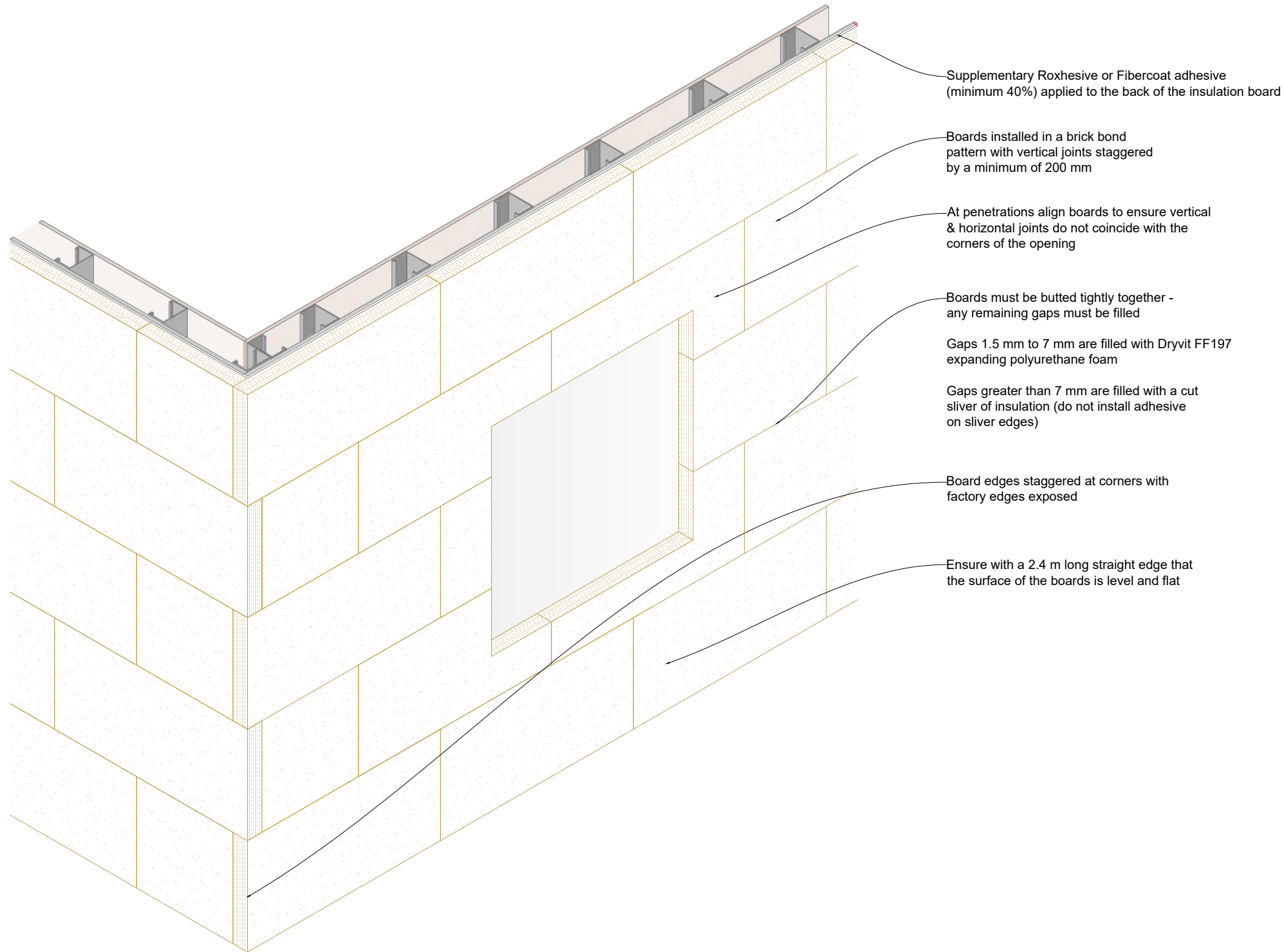
Title  
**Adhesive application**

|                         |                          |
|-------------------------|--------------------------|
| Date<br><b>Nov 2021</b> | Drg no<br><b>RPS-002</b> |
|-------------------------|--------------------------|

|                     |                       |
|---------------------|-----------------------|
| Scale<br><b>NTS</b> | Drawn by<br><b>KM</b> |
|---------------------|-----------------------|



Tremco CPG UK Ltd,  
Coupland Road,  
Hindley Green,  
Wigan, Lancs. WN2 4HP  
www.cpg-europe.com



General Notes

The architecture, engineering and design of the project using the Dryvit products is the responsibility of the project's design professional. All systems must comply with National Building Regulations and Standards.

This detail is for general information and guidance only and Tremco CPG UK Ltd specifically disclaims any liability for the use of this detail and for the architecture, design, engineering of workmanship of any project.

The project design professional determines, in its sole discretion, whether this detail or a functionally equivalent alternative is best suited for the project. Use of a functionally equivalent detail does not violate Tremco CPG UK's warranty.

These details are subject to change without notice. Please contact Tremco CPG UK to ensure you have the most recent version.



System  
**Roxsulation Pro**

Project  
**Standard Detail Drawing**

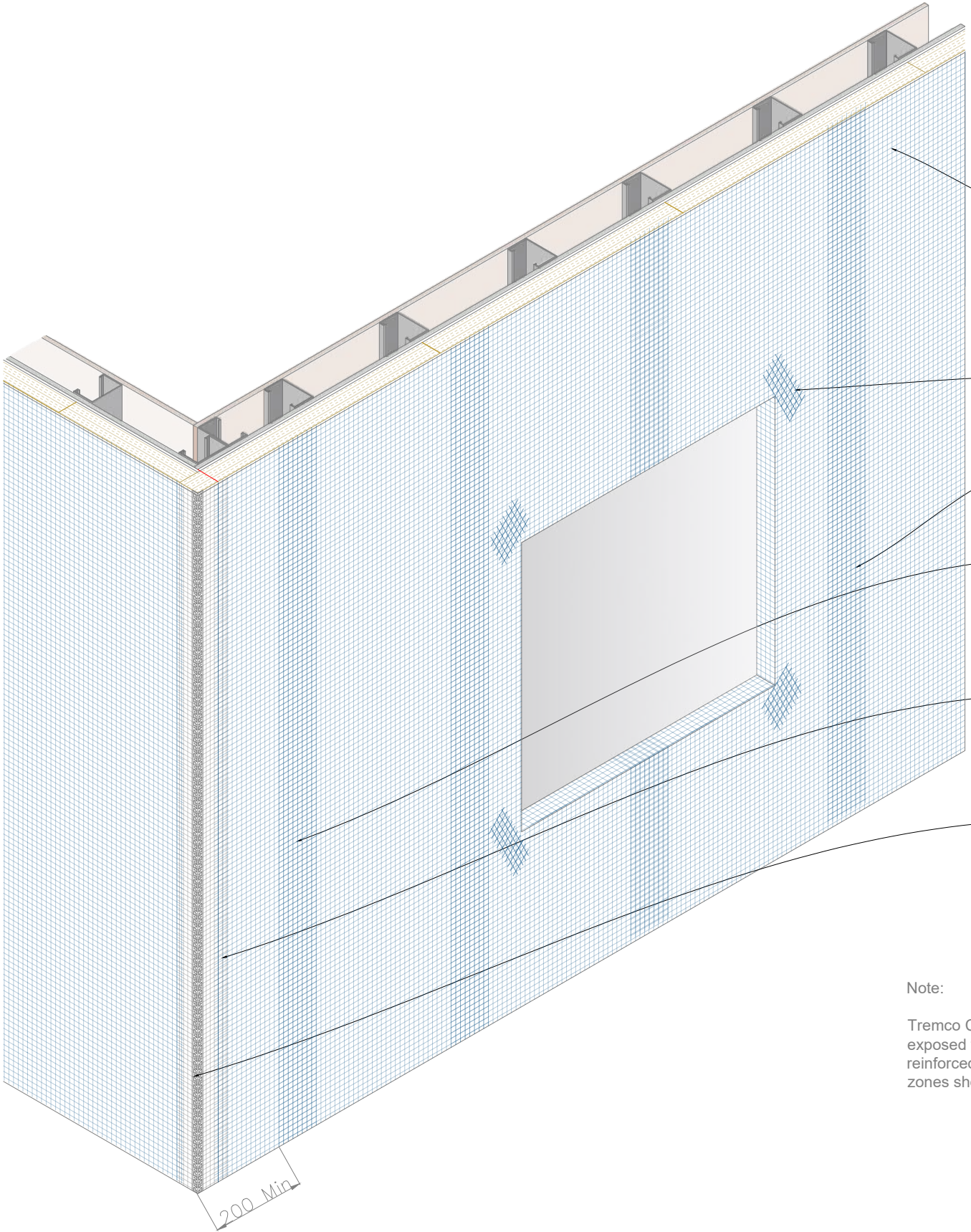
Title  
**Board layout**

|                         |                            |
|-------------------------|----------------------------|
| Date<br><b>Nov 2021</b> | Drg. no.<br><b>RPS-003</b> |
|-------------------------|----------------------------|

|                     |                       |
|---------------------|-----------------------|
| Scale<br><b>NTS</b> | Drawn by<br><b>KM</b> |
|---------------------|-----------------------|



Tremco CPG UK Ltd,  
Coupland Road,  
Hindley Green,  
Wigan, Lancs. WN2 4HP  
[www.cpg-europe.com](http://www.cpg-europe.com)



Standard plus mesh to be fully emedded into the first layer of basecoat - it is important to ensure the mesh is free of wrinkles, completely embedded into the basecoat & required minimum thickness of basecoat is achieved

240x300 mm mesh stress patches to corners of openings

Mesh to be overlapped a minimum of 100 mm at mesh joints

Mesh overlaps should be positioned at a minimim of 200 mm from corners

Mesh to overlap corner bead mesh by min 65 mm but not extend over the plastic corner bead

Corner bead with mesh - installed prior to mesh & basecoat application

Note:

Tremco CPG UK Ltd recommend that ground floor applications and all facades exposed to abnormal stress, high traffic, or deliberate impact have the base coat reinforced with a Panzer mesh prior to Standard Plus mesh. Location of high impact zones should be indicated on contract drawings.

General Notes

The architecture, engineering and design of the project using the Dryvit products is the responsibility of the project's design professional. All systems must comply with National Building Regulations and Standards.  
This detail is for general information and guidance only and Tremco CPG UK Ltd specifically disclaims any liability for the use of this detail and for the architecture, design, engineering of workmanship of any project.  
The project design professional determines, in its sole discretion, whether this detail or a functionally equivalent alternative is best suited for the project. Use of a functionally equivalent detail does not violate Tremco CPG UK's warranty.  
These details are subject to change without notice. Please contact Tremco CPG UK to ensure you have the most recent version.



System  
**Roxsulation Pro**

Project  
**Standard Detail Drawing**

Title  
**Mesh application**

Date  
**Nov 2021**

Drg no  
**RPS-004**

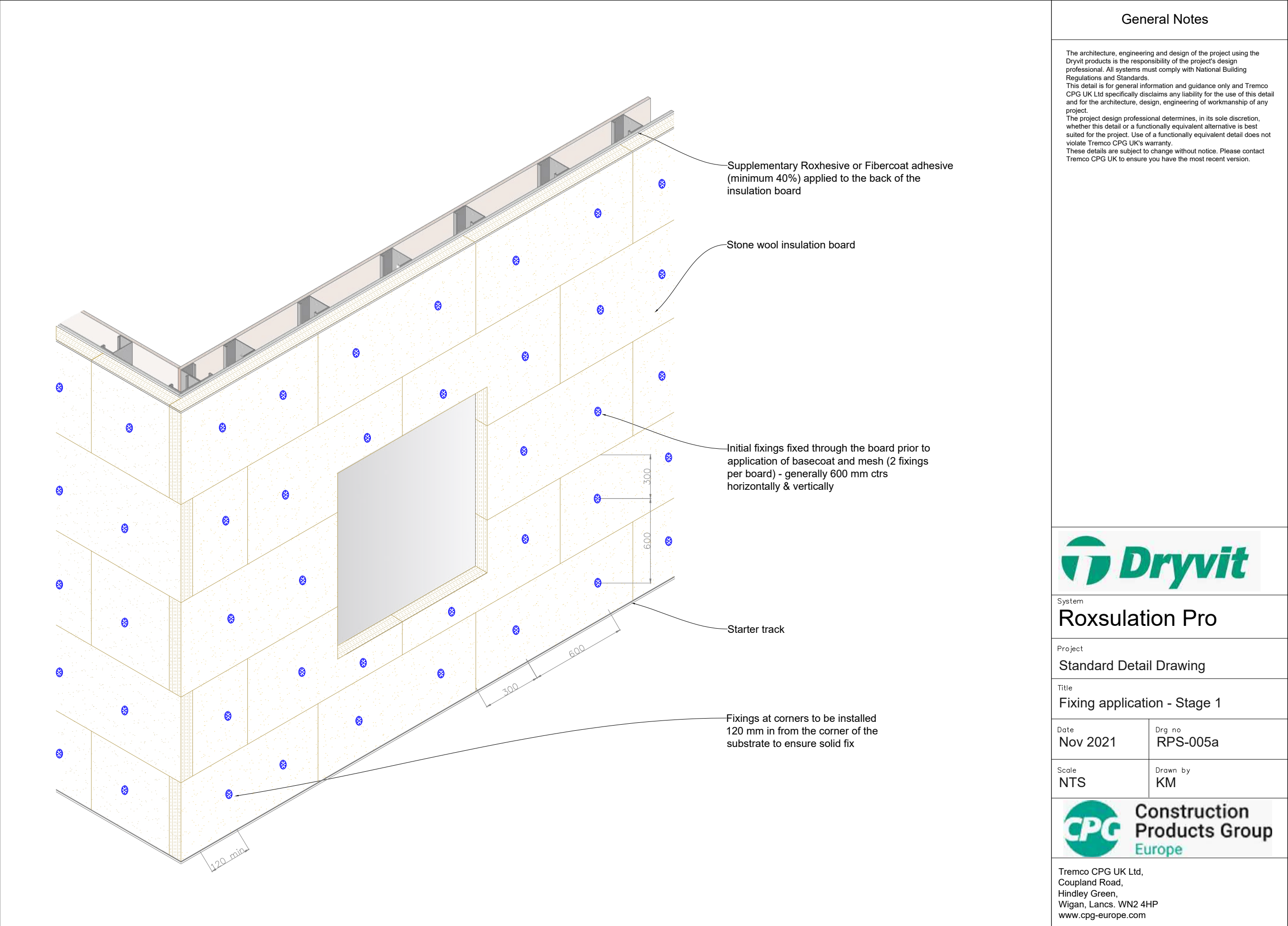
Scale  
**NTS**

Drawn by  
**KM**



Tremco CPG UK Ltd,  
Coupland Road,  
Hindley Green,  
Wigan, Lancs. WN2 4HP  
www.cpg-europe.com





General Notes

The architecture, engineering and design of the project using the Dryvit products is the responsibility of the project's design professional. All systems must comply with National Building Regulations and Standards.  
This detail is for general information and guidance only and Tremco CPG UK Ltd specifically disclaims any liability for the use of this detail and for the architecture, design, engineering of workmanship of any project.  
The project design professional determines, in its sole discretion, whether this detail or a functionally equivalent alternative is best suited for the project. Use of a functionally equivalent detail does not violate Tremco CPG UK's warranty.  
These details are subject to change without notice. Please contact Tremco CPG UK to ensure you have the most recent version.



System  
**Roxsulation Pro**

Project  
**Standard Detail Drawing**

Title  
**Fixing application - Stage 1**

Date  
**Nov 2021**

Drg no  
**RPS-005a**

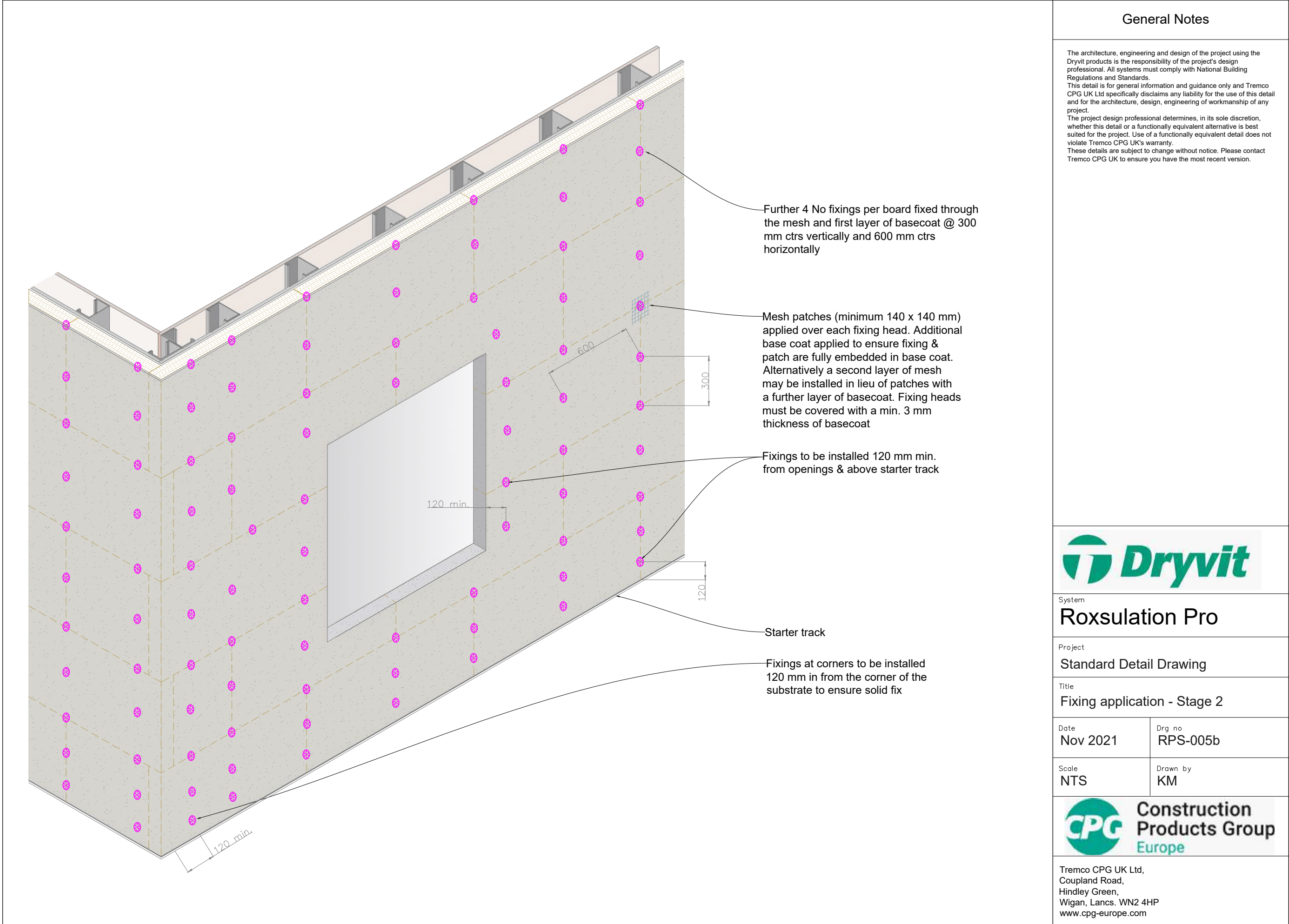
Scale  
**NTS**

Drawn by  
**KM**



Tremco CPG UK Ltd,  
Coupland Road,  
Hindley Green,  
Wigan, Lancs. WN2 4HP  
[www.cpg-europe.com](http://www.cpg-europe.com)





General Notes

The architecture, engineering and design of the project using the Dryvit products is the responsibility of the project's design professional. All systems must comply with National Building Regulations and Standards.  
This detail is for general information and guidance only and Tremco CPG UK Ltd specifically disclaims any liability for the use of this detail and for the architecture, design, engineering of workmanship of any project.  
The project design professional determines, in its sole discretion, whether this detail or a functionally equivalent alternative is best suited for the project. Use of a functionally equivalent detail does not violate Tremco CPG UK's warranty.  
These details are subject to change without notice. Please contact Tremco CPG UK to ensure you have the most recent version.



System  
**Roxsulation Pro**

Project  
**Standard Detail Drawing**

Title  
**Fixing application - Stage 2**

Date  
**Nov 2021**

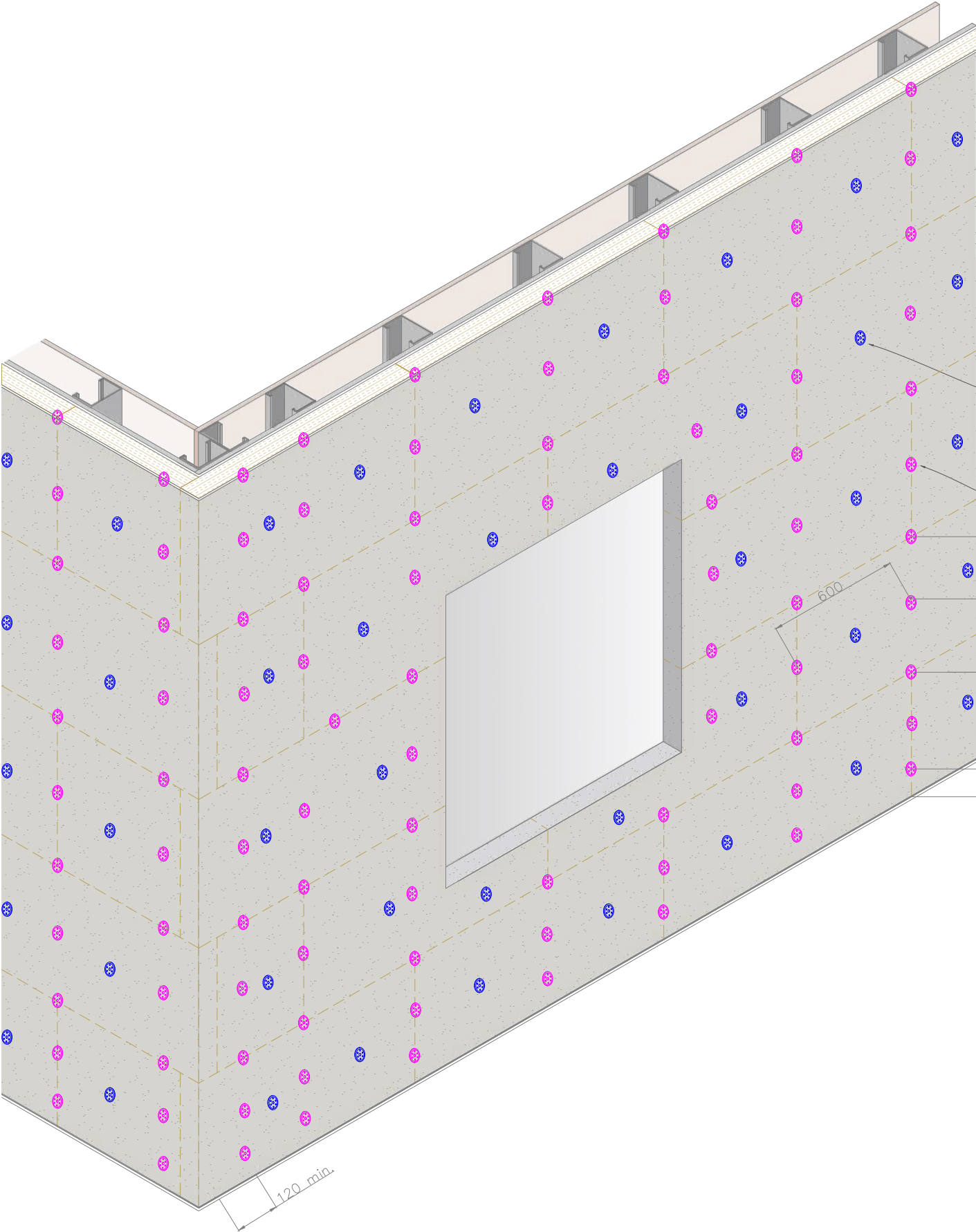
Drg no  
**RPS-005b**

Scale  
**NTS**

Drawn by  
**KM**



Tremco CPG UK Ltd,  
Coupland Road,  
Hindley Green,  
Wigan, Lancs. WN2 4HP  
[www.cpg-europe.com](http://www.cpg-europe.com)



Fixings shown as blue are installed underneath the mesh and first layer of basecoat (Stage 1)

Fixings shown as pink are installed through the mesh and first layer of basecoat (Stage 2)

General Notes

The architecture, engineering and design of the project using the Dryvit products is the responsibility of the project's design professional. All systems must comply with National Building Regulations and Standards.

This detail is for general information and guidance only and Tremco CPG UK Ltd specifically disclaims any liability for the use of this detail and for the architecture, design, engineering of workmanship of any project.

The project design professional determines, in its sole discretion, whether this detail or a functionally equivalent alternative is best suited for the project. Use of a functionally equivalent detail does not violate Tremco CPG UK's warranty.

These details are subject to change without notice. Please contact Tremco CPG UK to ensure you have the most recent version.



System  
**Roxsulation Pro**

Project  
**Standard Detail Drawing**

Title  
**Complete fixing application**

Date  
**Nov 2021**

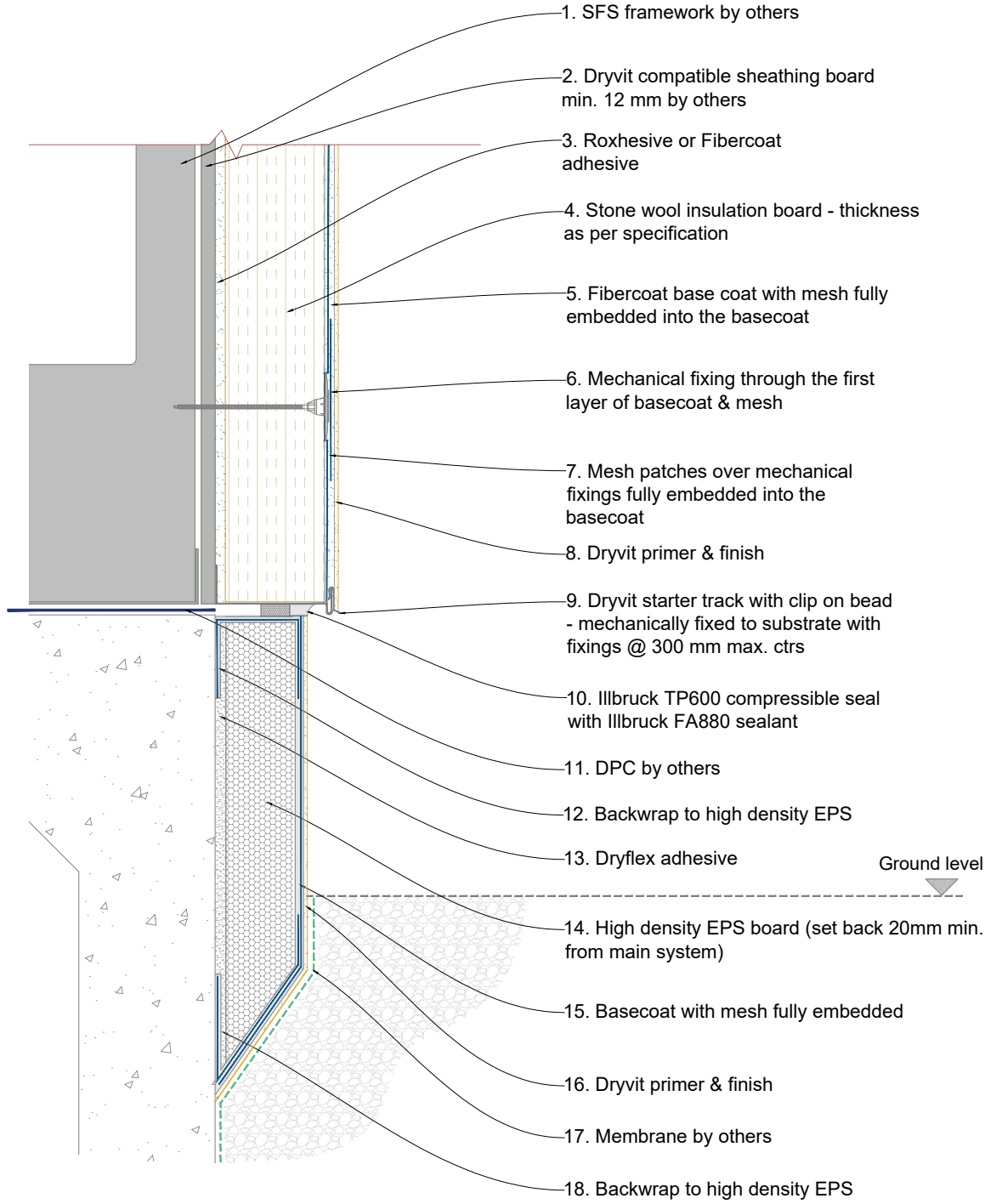
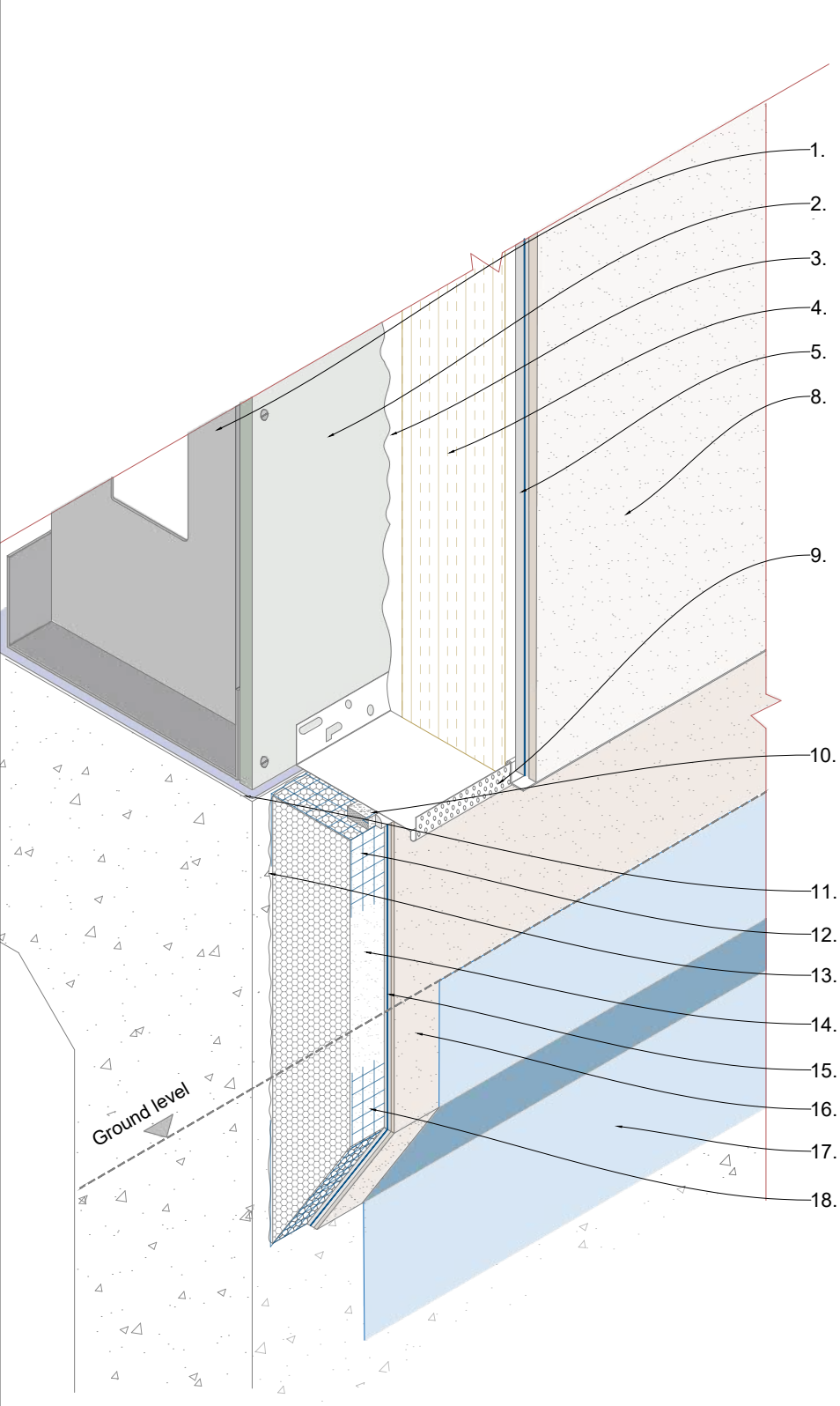
Drg no  
**RPS-005c**

Scale  
**NTS**

Drawn by  
**KM**



Tremco CPG UK Ltd,  
Coupland Road,  
Hindley Green,  
Wigan, Lancs. WN2 4HP  
[www.cpg-europe.com](http://www.cpg-europe.com)



General Notes

The architecture, engineering and design of the project using the Dryvit products is the responsibility of the project's design professional. All systems must comply with National Building Regulations and Standards.  
This detail is for general information and guidance only and Tremco CPG UK Ltd specifically disclaims any liability for the use of this detail and for the architecture, design, engineering of workmanship of any project.  
The project design professional determines, in its sole discretion, whether this detail or a functionally equivalent alternative is best suited for the project. Use of a functionally equivalent detail does not violate Tremco CPG UK's warranty.  
These details are subject to change without notice. Please contact Tremco CPG UK to ensure you have the most recent version.



System  
**Roxsulation Pro**

Project  
**Standard Detail Drawing**

Title  
**Fully insulated plinth below DPC**

|                         |                          |
|-------------------------|--------------------------|
| Date<br><b>Nov 2021</b> | Drg no<br><b>RPS-006</b> |
|-------------------------|--------------------------|

|                     |                       |
|---------------------|-----------------------|
| Scale<br><b>NTS</b> | Drawn by<br><b>KM</b> |
|---------------------|-----------------------|



Tremco CPG UK Ltd,  
Coupland Road,  
Hindley Green,  
Wigan, Lancs. WN2 4HP  
[www.cpg-europe.com](http://www.cpg-europe.com)



General Notes

The architecture, engineering and design of the project using the Dryvit products is the responsibility of the project's design professional. All systems must comply with National Building Regulations and Standards.

This detail is for general information and guidance only and Tremco CPG UK Ltd specifically disclaims any liability for the use of this detail and for the architecture, design, engineering of workmanship of any project.

The project design professional determines, in its sole discretion, whether this detail or a functionally equivalent alternative is best suited for the project. Use of a functionally equivalent detail does not violate Tremco CPG UK's warranty.

These details are subject to change without notice. Please contact Tremco CPG UK to ensure you have the most recent version.



System  
**Roxsulation Pro**

Project  
**Standard Detail Drawing**

Title  
**Window reveal with Frameseal bead**

Date  
**Nov 2021**

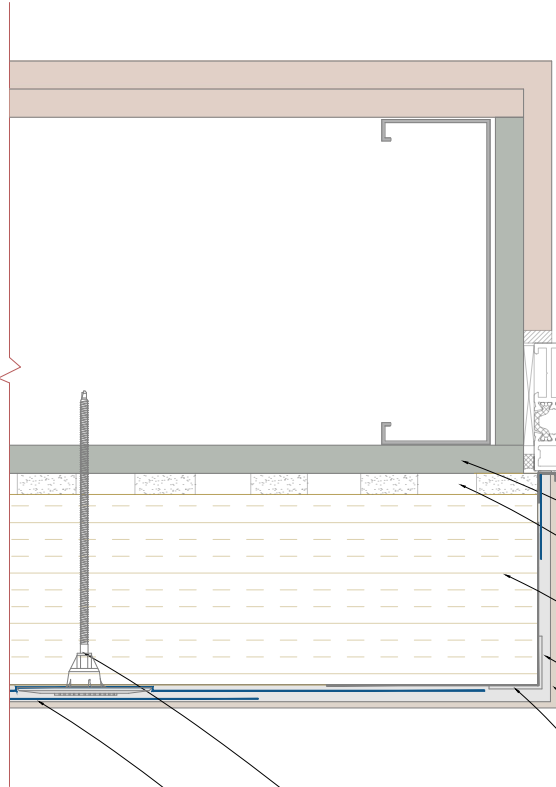
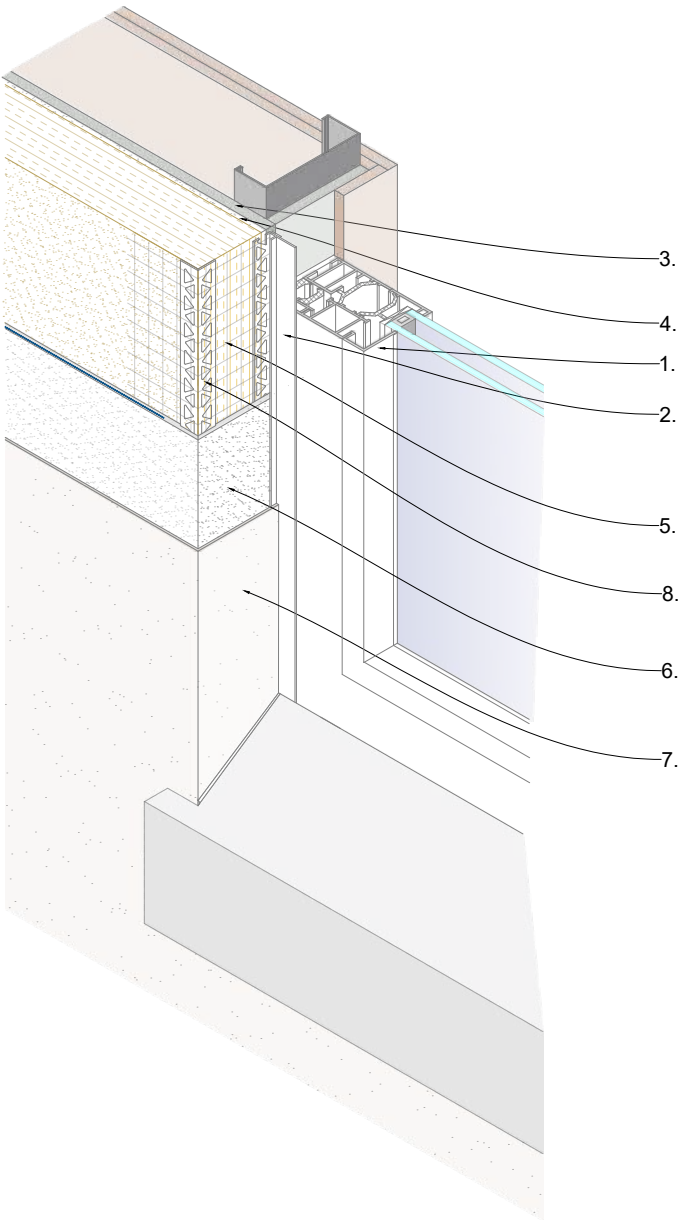
Drg no  
**RPS-007a**

Scale  
**NTS**

Drawn by  
**KM**



Tremco CPG UK Ltd,  
Coupland Road,  
Hindley Green,  
Wigan, Lancs. WN2 4HP  
[www.cpg-europe.com](http://www.cpg-europe.com)



- 1. Existing window
- 2. Frameseal bead with mesh & removable protective strip
- 3. Dryvit compatible sheathing board min. 12 mm by others
- 4. Roxhesive or Fibercoat adhesive
- 5. Stone wool insulation - thickness as per specification
- 6. Fibercoat base coat with frameseal bead & corner bead mesh fully embedded into the base coat
- 7. Dryvit primer & finish
- 8. Corner bead with mesh
- 9. Mechanical fixing through the first layer of basecoat & mesh
- 10. Mesh patches over mechanical fixings fully embedded into the basecoat

General Notes

The architecture, engineering and design of the project using the Dryvit products is the responsibility of the project's design professional. All systems must comply with National Building Regulations and Standards.

This detail is for general information and guidance only and Tremco CPG UK Ltd specifically disclaims any liability for the use of this detail and for the architecture, design, engineering or workmanship of any project.

The project design professional determines, in its sole discretion, whether this detail or a functionally equivalent alternative is best suited for the project. Use of a functionally equivalent detail does not violate Tremco CPG UK's warranty.

These details are subject to change without notice. Please contact Tremco CPG UK to ensure you have the most recent version.



System  
**Roxsulation Pro**

Project  
**Standard Detail Drawing**

Title  
**Window reveal /Compressible seal option**

Date  
**Nov 2021**

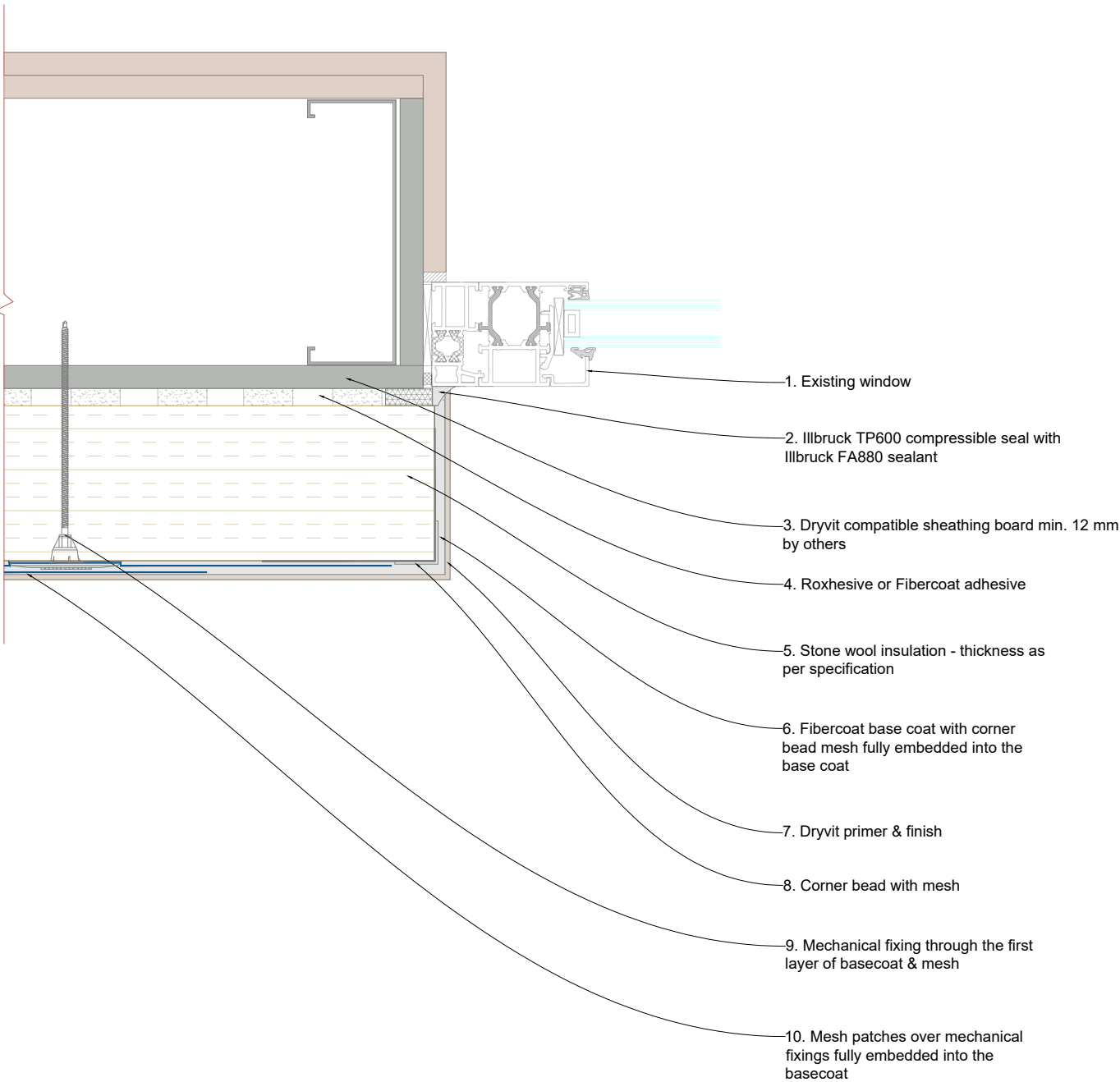
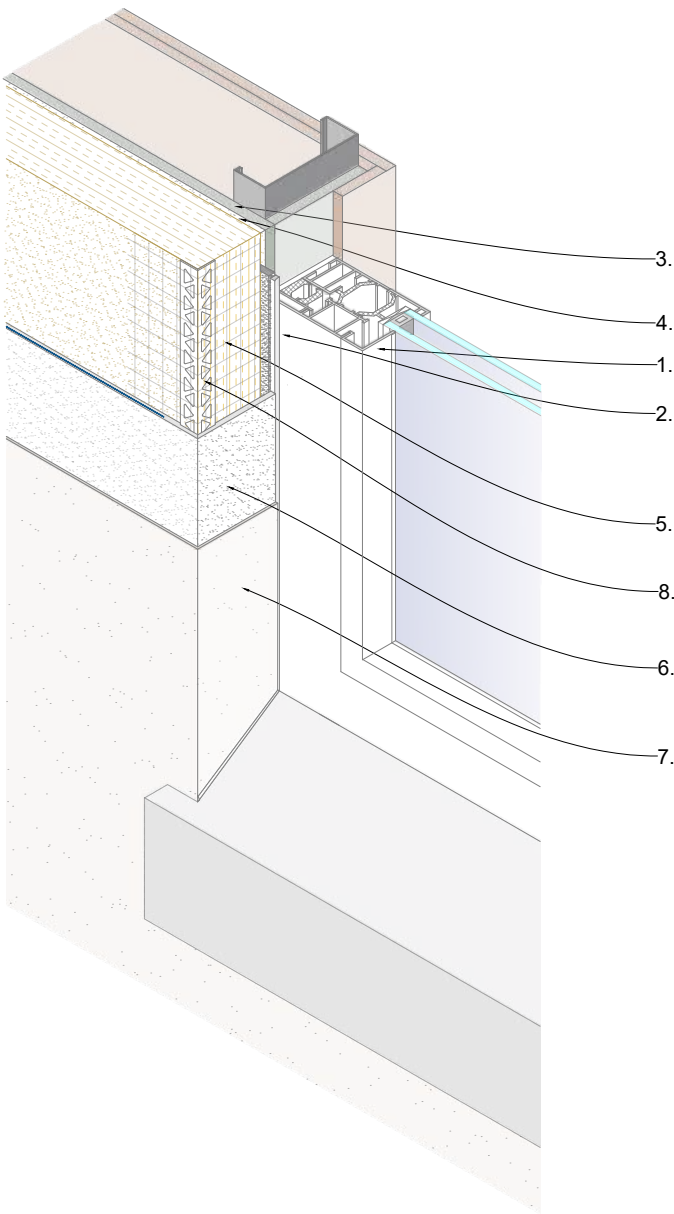
Drg no  
**RPS-007b**

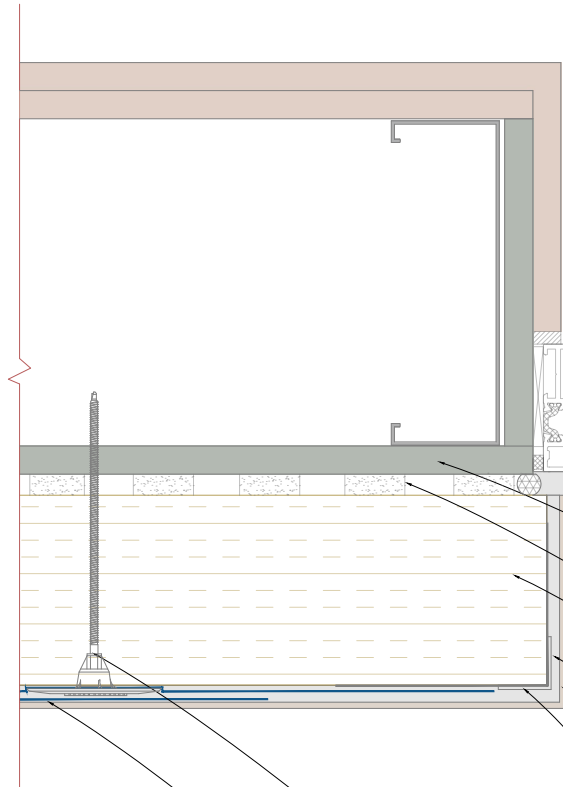
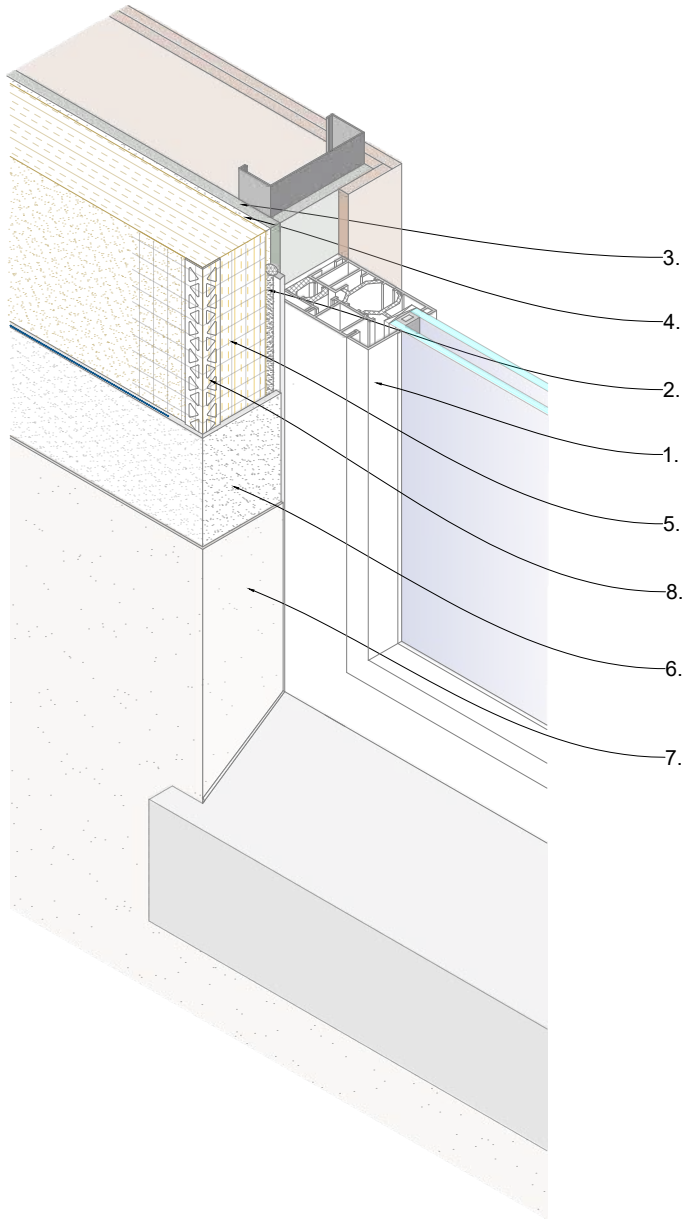
Scale  
**NTS**

Drawn by  
**KM**



Tremco CPG UK Ltd,  
Coupland Road,  
Hindley Green,  
Wigan, Lancs. WN2 4HP  
www.cpg-europe.com





1. Existing window
2. Illbruck PR102 backer rod with Illbruck FA880 sealant
3. Dryvit compatible sheathing board min. 12 mm by others
4. Roxhesive or Fibercoat adhesive
5. Stone wool insulation - thickness as per specification
6. Fibercoat base coat with corner bead mesh fully embedded into the base coat
7. Dryvit primer & finish
8. Corner bead with mesh
9. Mechanical fixing through the first layer of basecoat & mesh
10. Mesh patches over mechanical fixings fully embedded into the basecoat

## General Notes

The architecture, engineering and design of the project using the Dryvit products is the responsibility of the project's design professional. All systems must comply with National Building Regulations and Standards.

This detail is for general information and guidance only and Tremco CPG UK Ltd specifically disclaims any liability for the use of this detail and for the architecture, design, engineering of workmanship of any project.

The project design professional determines, in its sole discretion, whether this detail or a functionally equivalent alternative is best suited for the project. Use of a functionally equivalent detail does not violate Tremco CPG UK's warranty.

These details are subject to change without notice. Please contact Tremco CPG UK to ensure you have the most recent version.



System  
**Roxsulation Pro**

Project  
**Standard Detail Drawing**

Title  
**Window reveal /Backer rod option**

Date  
**Nov 2021**

Drg no  
**RPS-007c**

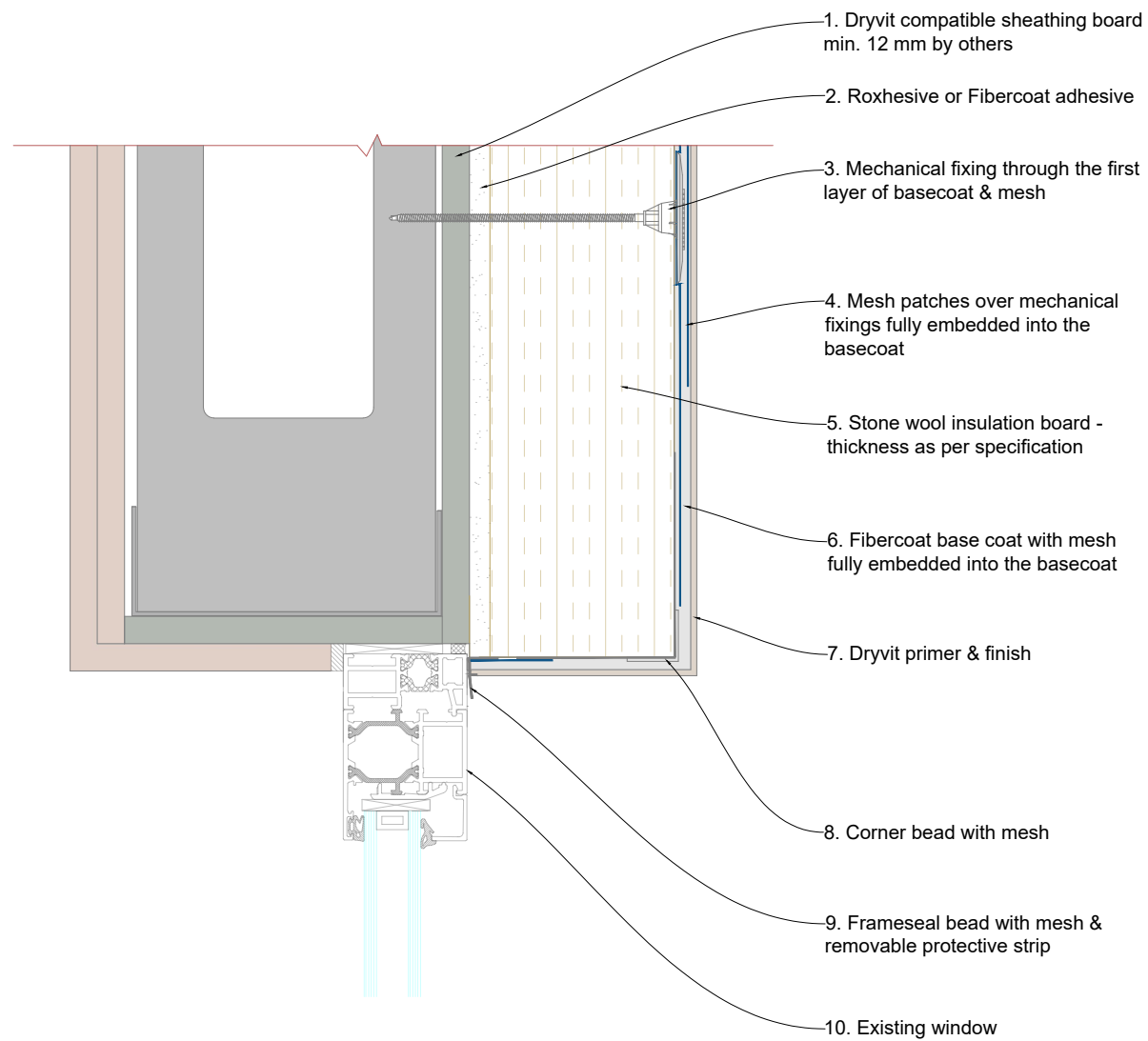
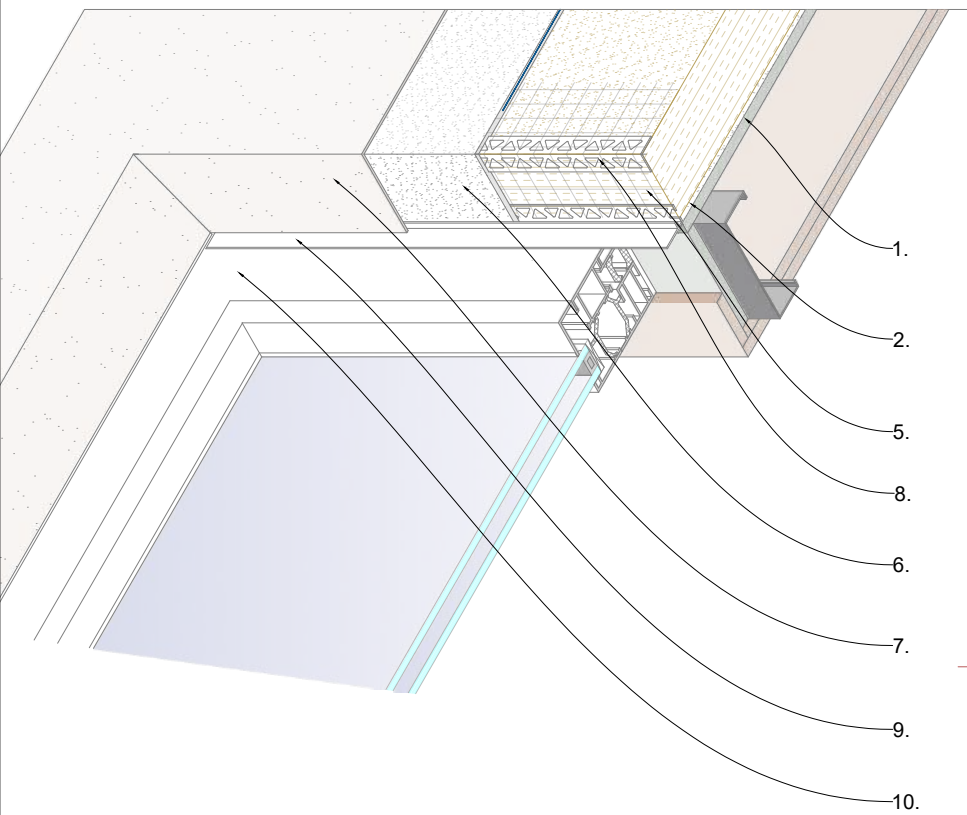
Scale  
**NTS**

Drawn by  
**KM**



Tremco CPG UK Ltd,  
Coupland Road,  
Hindley Green,  
Wigan, Lancs. WN2 4HP  
[www.cpg-europe.com](http://www.cpg-europe.com)





## General Notes

The architecture, engineering and design of the project using the Dryvit products is the responsibility of the project's design professional. All systems must comply with National Building Regulations and Standards.

This detail is for general information and guidance only and Tremco CPG UK Ltd specifically disclaims any liability for the use of this detail and for the architecture, design, engineering of workmanship of any project.

The project design professional determines, in its sole discretion, whether this detail or a functionally equivalent alternative is best suited for the project. Use of a functionally equivalent detail does not violate Tremco CPG UK's warranty.

These details are subject to change without notice. Please contact Tremco CPG UK to ensure you have the most recent version.



System

**Roxsulation Pro**

Project

**Standard Detail Drawing**

Title

**Window head with Frameseal bead**

Date

**Nov 2021**

Drg no

**RPS-008a**

Scale

**NTS**

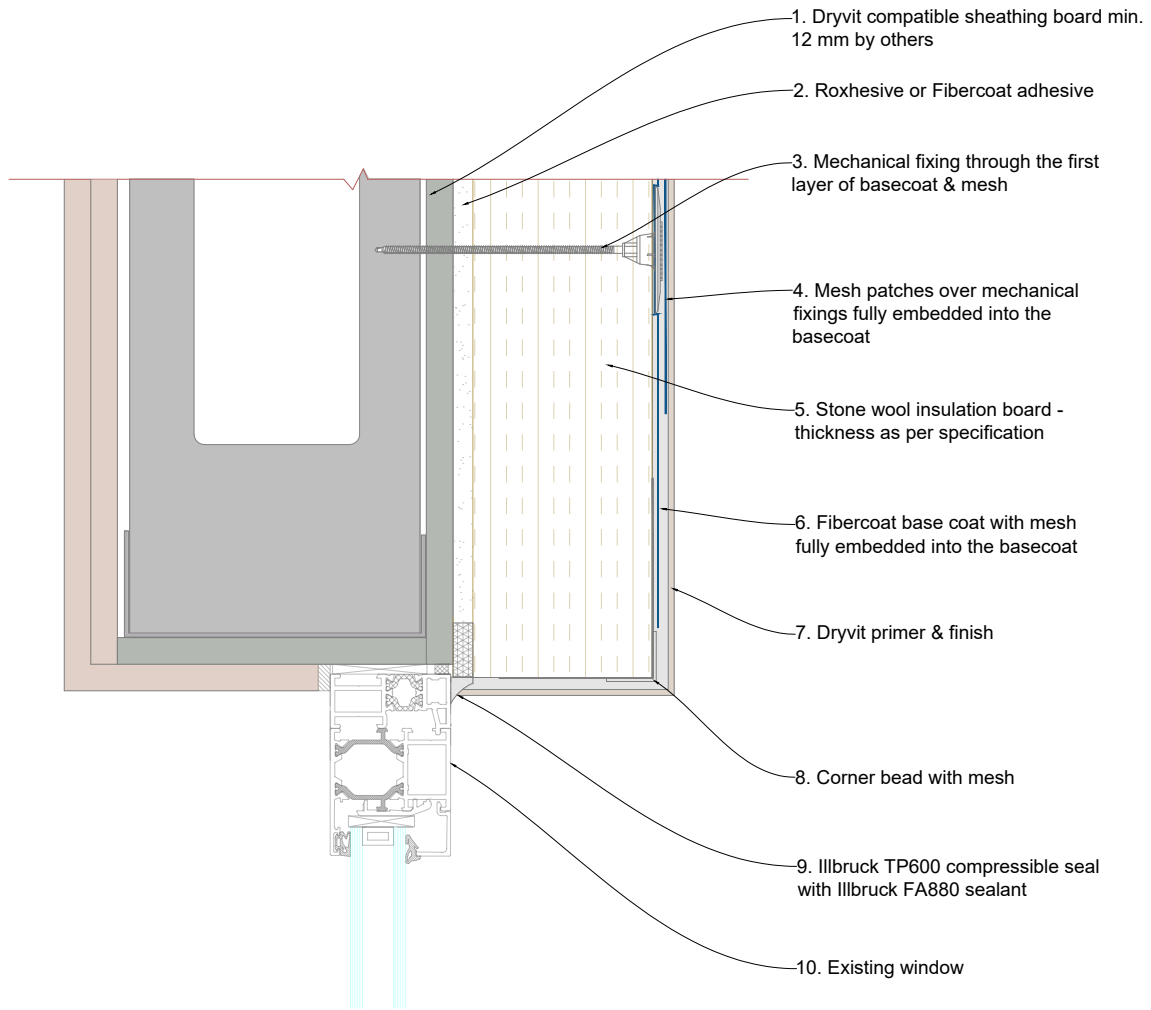
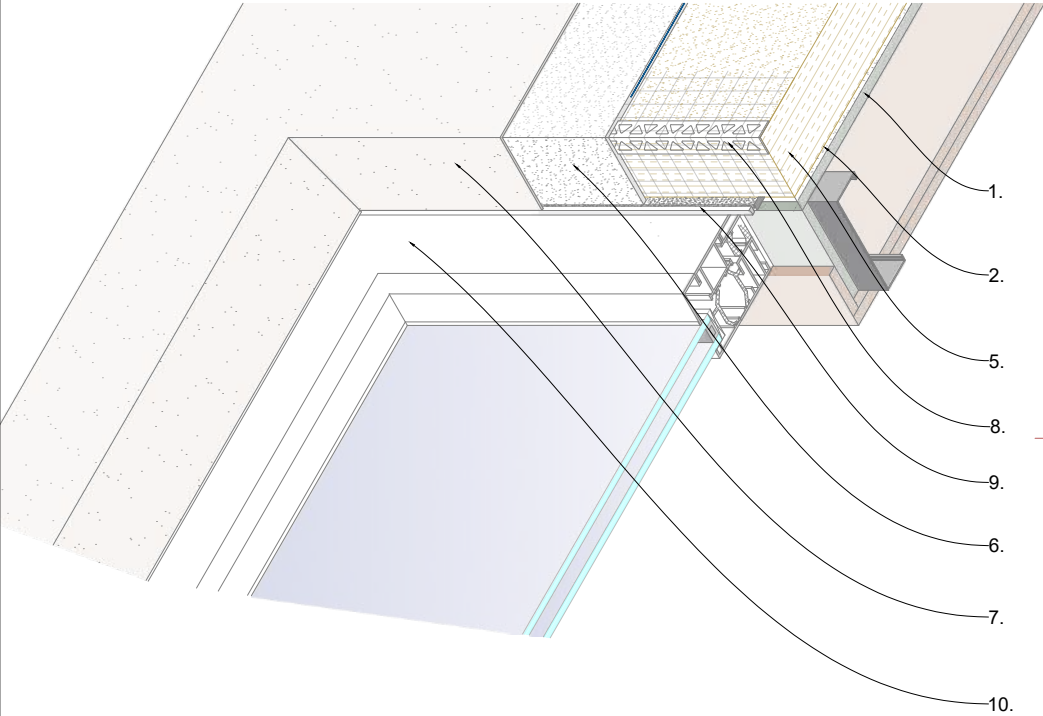
Drawn by

**KM**



**Construction  
Products Group  
Europe**

Tremco CPG UK Ltd,  
Coupland Road,  
Hindley Green,  
Wigan, Lancs. WN2 4HP  
[www.cpg-europe.com](http://www.cpg-europe.com)



General Notes

The architecture, engineering and design of the project using the Dryvit products is the responsibility of the project's design professional. All systems must comply with National Building Regulations and Standards.

This detail is for general information and guidance only and Tremco CPG UK Ltd specifically disclaims any liability for the use of this detail and for the architecture, design, engineering of workmanship of any project.

The project design professional determines, in its sole discretion, whether this detail or a functionally equivalent alternative is best suited for the project. Use of a functionally equivalent detail does not violate Tremco CPG UK's warranty.

These details are subject to change without notice. Please contact Tremco CPG UK to ensure you have the most recent version.



System  
**Roxsulation Pro**

Project  
**Standard Detail Drawing**

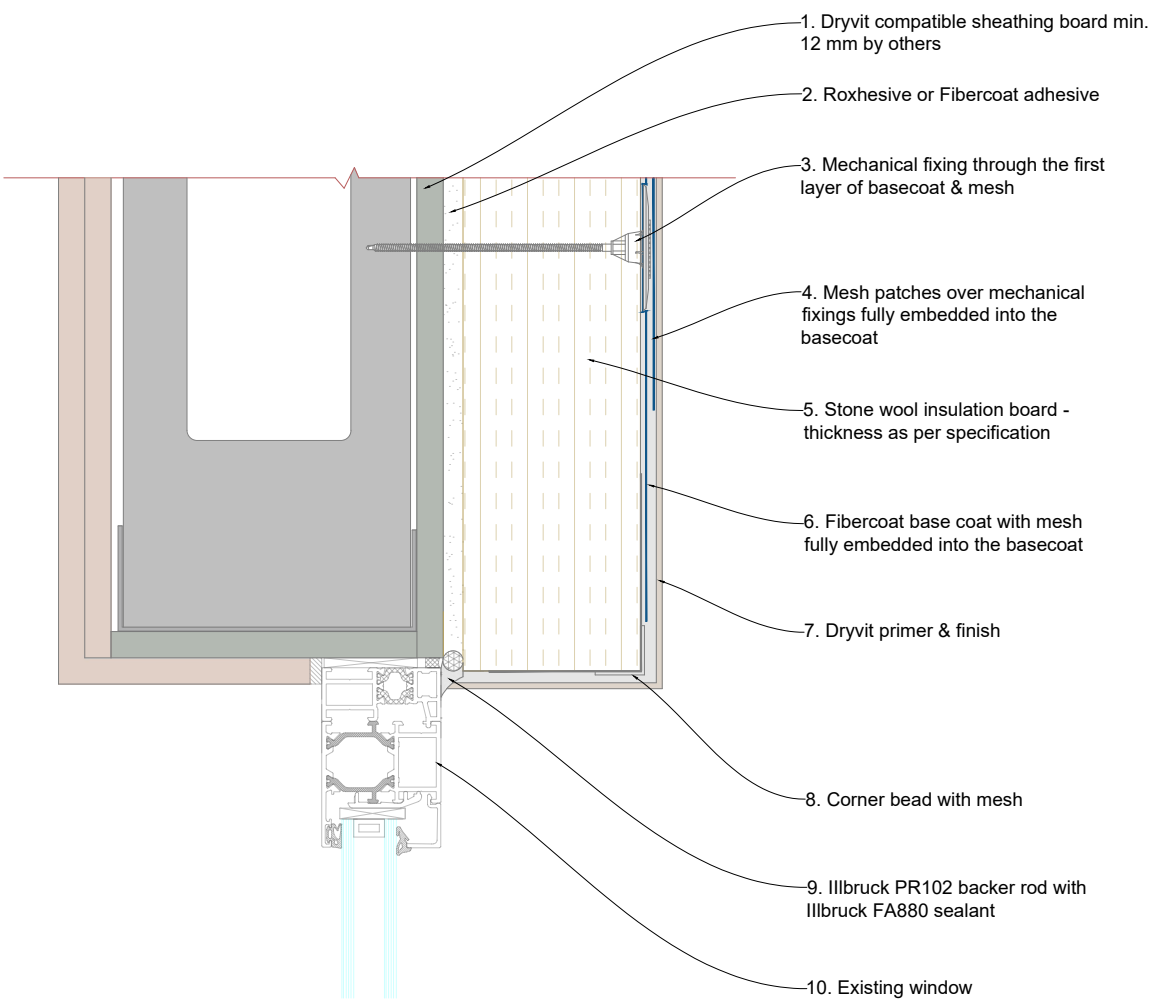
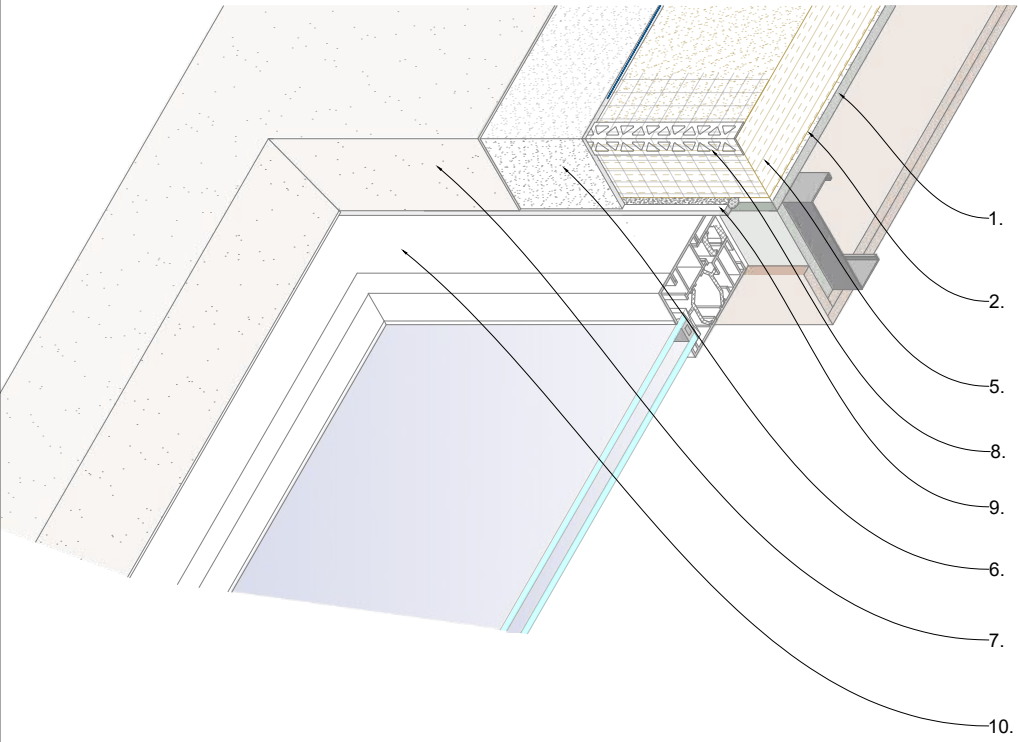
Title  
**Window head with Compressible seal option**

|                         |                           |
|-------------------------|---------------------------|
| Date<br><b>Nov 2021</b> | Drg no<br><b>RPS-008b</b> |
|-------------------------|---------------------------|

|                     |                       |
|---------------------|-----------------------|
| Scale<br><b>NTS</b> | Drawn by<br><b>KM</b> |
|---------------------|-----------------------|



Tremco CPG UK Ltd,  
Coupland Road,  
Hindley Green,  
Wigan, Lancs. WN2 4HP  
[www.cpg-europe.com](http://www.cpg-europe.com)



General Notes

The architecture, engineering and design of the project using the Dryvit products is the responsibility of the project's design professional. All systems must comply with National Building Regulations and Standards.

This detail is for general information and guidance only and Tremco CPG UK Ltd specifically disclaims any liability for the use of this detail and for the architecture, design, engineering of workmanship of any project.

The project design professional determines, in its sole discretion, whether this detail or a functionally equivalent alternative is best suited for the project. Use of a functionally equivalent detail does not violate Tremco CPG UK's warranty.

These details are subject to change without notice. Please contact Tremco CPG UK to ensure you have the most recent version.



System  
**Roxsulation Pro**

Project  
**Standard Detail Drawing**

Title  
**Window head with Backer rod option**

Date  
**Nov 2021**

Drg no  
**RPS-008c**

Scale  
**NTS**

Drawn by  
**KM**



Tremco CPG UK Ltd,  
Coupland Road,  
Hindley Green,  
Wigan, Lancs. WN2 4HP  
[www.cpg-europe.com](http://www.cpg-europe.com)



General Notes

The architecture, engineering and design of the project using the Dryvit products is the responsibility of the project's design professional. All systems must comply with National Building Regulations and Standards.  
This detail is for general information and guidance only and Tremco CPG UK Ltd specifically disclaims any liability for the use of this detail and for the architecture, design, engineering or workmanship of any project.  
The project design professional determines, in its sole discretion, whether this detail or a functionally equivalent alternative is best suited for the project. Use of a functionally equivalent detail does not violate Tremco CPG UK's warranty.  
These details are subject to change without notice. Please contact Tremco CPG UK to ensure you have the most recent version.



System  
**Roxsulation Pro**

Project  
**Standard Detail Drawing**

Title  
**Window cill**

Date  
**Nov 2021**

Drg. no  
**RPS-009**

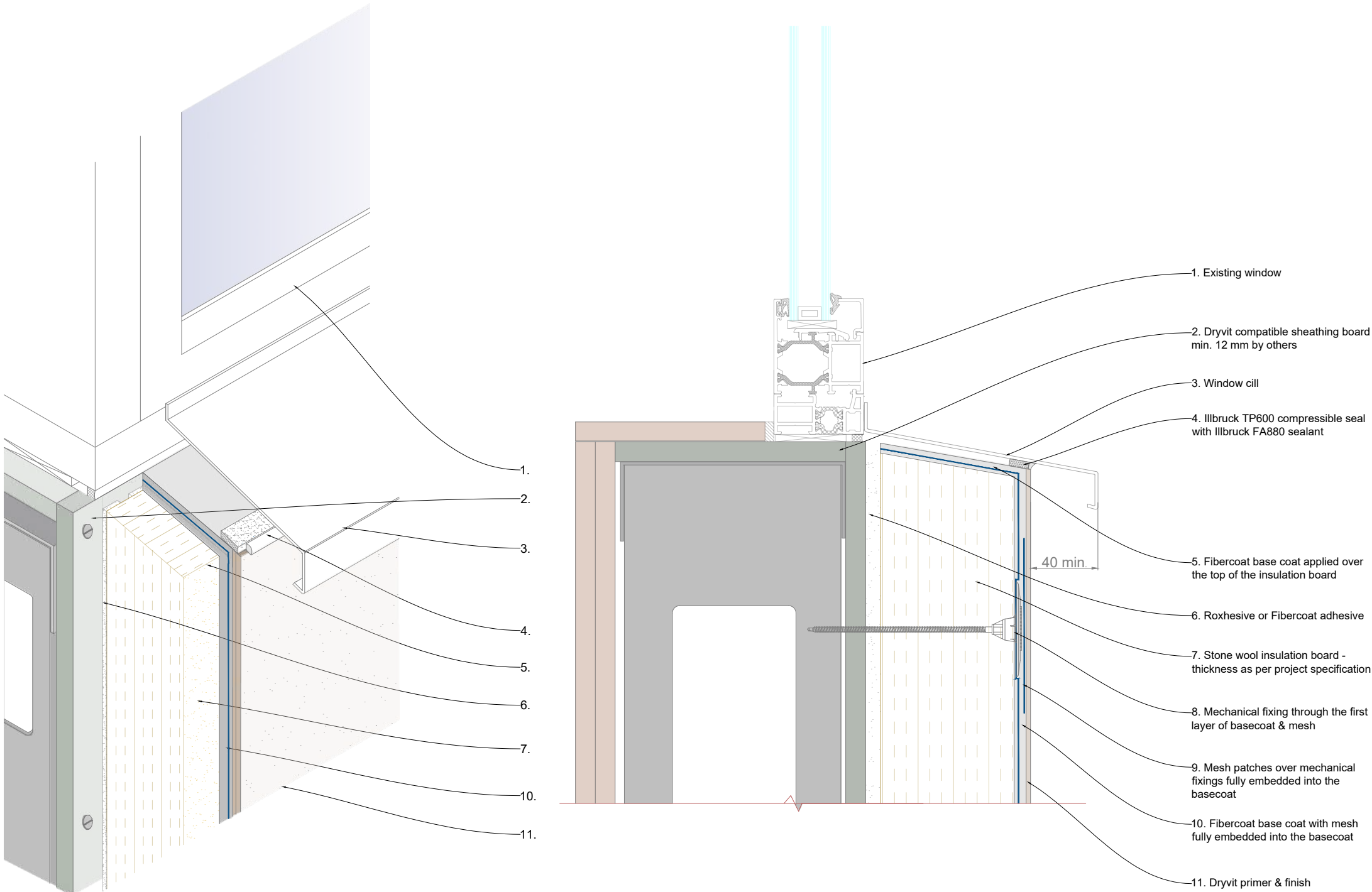
Scale  
**NTS**

Drawn by  
**KM**



**Construction  
Products Group  
Europe**

Tremco CPG UK Ltd,  
Coupland Road,  
Hindley Green,  
Wigan, Lancs. WN2 4HP  
[www.cpg-europe.com](http://www.cpg-europe.com)



General Notes

The architecture, engineering and design of the project using the Dryvit products is the responsibility of the project's design professional. All systems must comply with National Building Regulations and Standards.  
This detail is for general information and guidance only and Tremco CPG UK Ltd specifically disclaims any liability for the use of this detail and for the architecture, design, engineering of workmanship of any project.  
The project design professional determines, in its sole discretion, whether this detail or a functionally equivalent alternative is best suited for the project. Use of a functionally equivalent detail does not violate Tremco CPG UK's warranty.  
These details are subject to change without notice. Please contact Tremco CPG UK to ensure you have the most recent version.



System  
**Roxsulation Pro**

Project  
**Standard Detail Drawing**

Title  
**Eaves detail**

Date  
**Nov 2021**

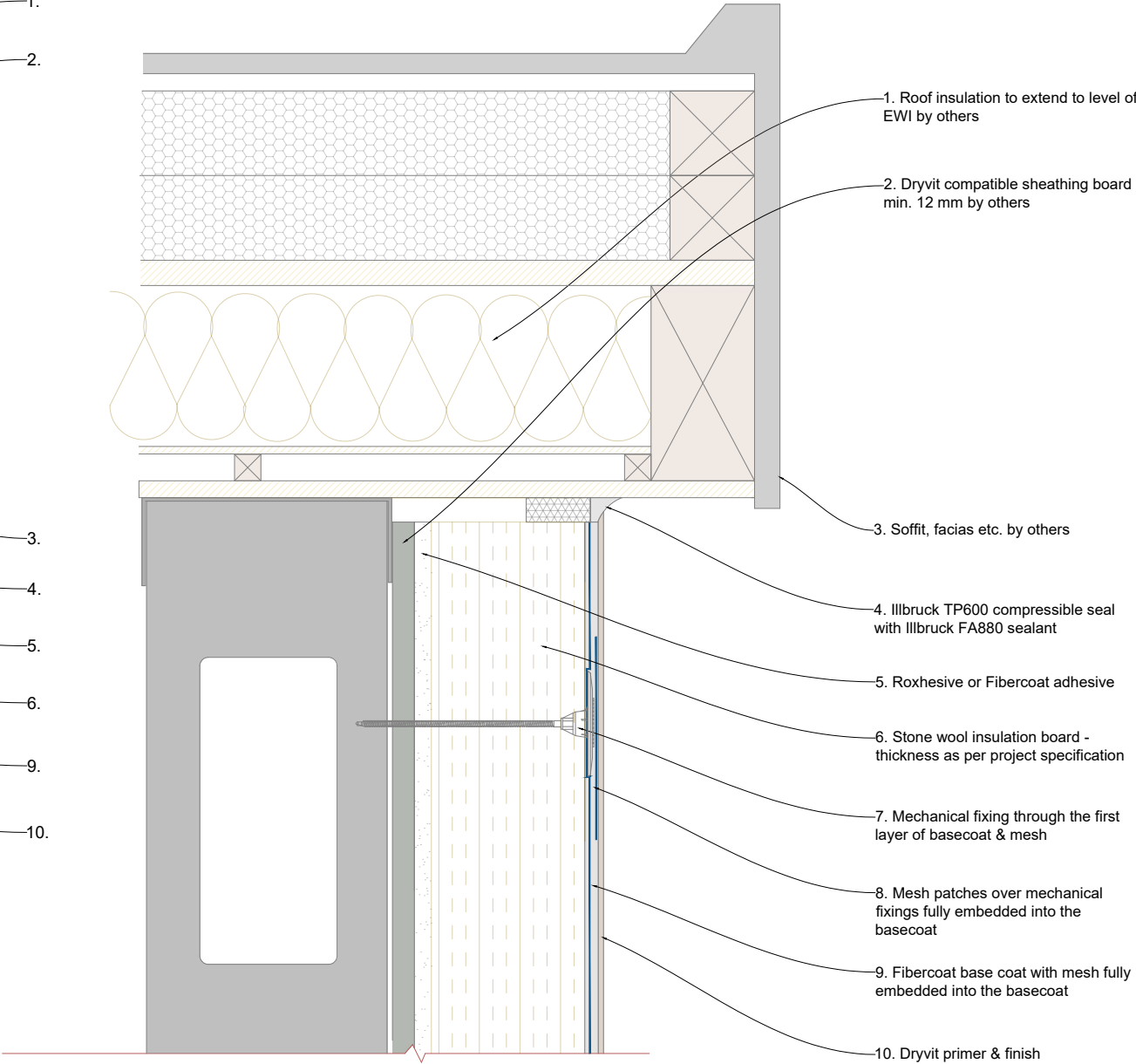
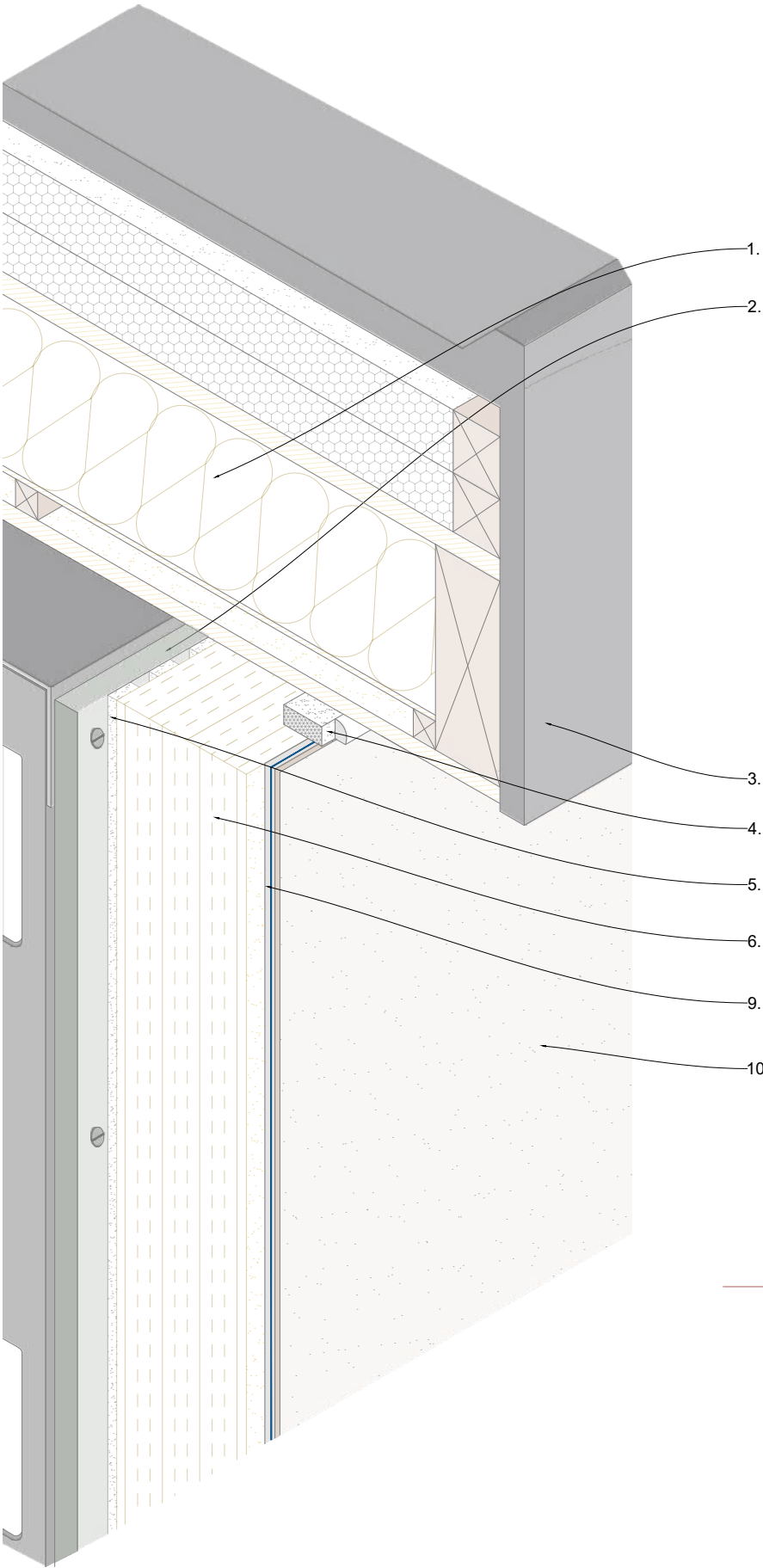
Drg no  
**RPS-010**

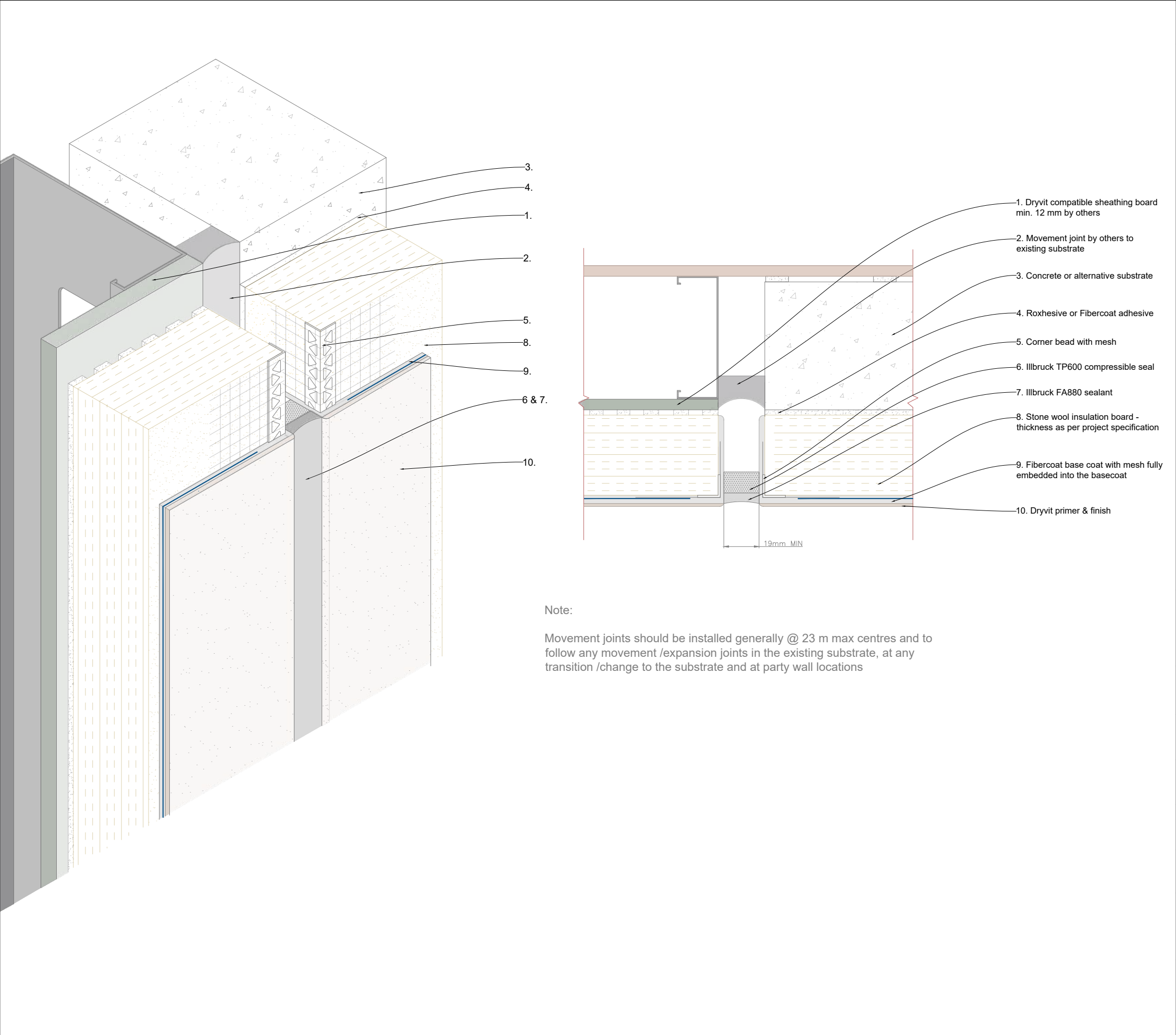
Scale  
**NTS**

Drawn by  
**KM**



Tremco CPG UK Ltd,  
Coupland Road,  
Hindley Green,  
Wigan, Lancs. WN2 4HP  
[www.cpg-europe.com](http://www.cpg-europe.com)





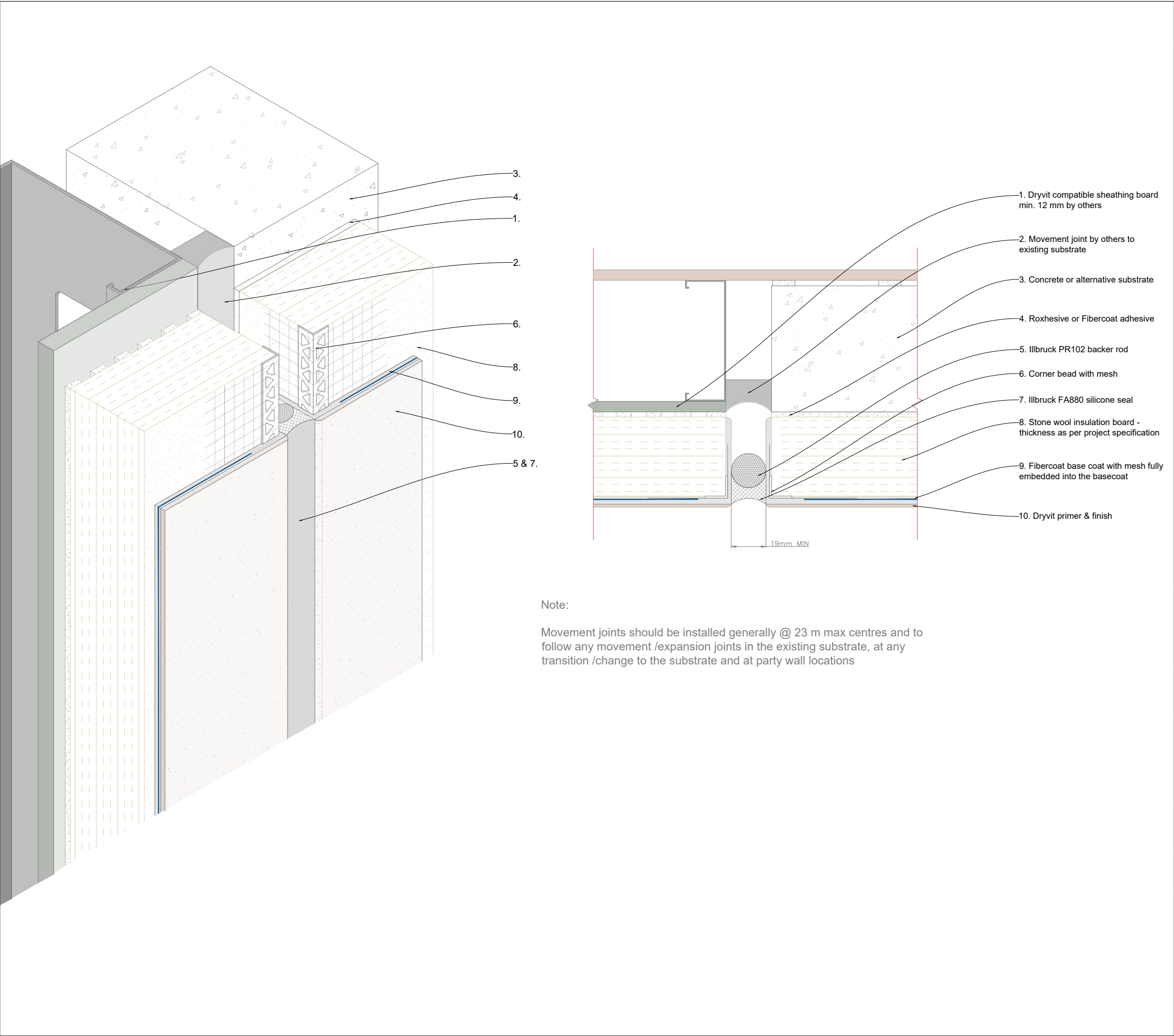
General Notes

The architecture, engineering and design of the project using the Dryvit products is the responsibility of the project's design professional. All systems must comply with National Building Regulations and Standards.  
This detail is for general information and guidance only and Tremco CPG UK Ltd specifically disclaims any liability for the use of this detail and for the architecture, design, engineering or workmanship of any project.  
The project design professional determines, in its sole discretion, whether this detail or a functionally equivalent alternative is best suited for the project. Use of a functionally equivalent detail does not violate Tremco CPG UK's warranty.  
These details are subject to change without notice. Please contact Tremco CPG UK to ensure you have the most recent version.



|   |          |
|---|----------|
| System  |          |
| Roxsulation Pro   |          |
| Project   |          |
| Standard Detail Drawing   |          |
| Title   |          |
| Movement joint - Compressible seal  |          |
| Date  | Drg no   |
| Nov 2021  | RPS-011a |
| Scale   | Drawn by |
| NTS   | KM       |
|   |          |
| Tremco CPG UK Ltd,<br>Coupland Road,<br>Hindley Green,<br>Wigan, Lancs. WN2 4HP<br>www.cpg-europe.com |          |





General Notes

The architecture, engineering and design of the project using the Dryvit products is the responsibility of the project's design professional. All systems must comply with National Building Regulations and Standards.

This detail is for general information and guidance only and Tremco CPG UK Ltd specifically disclaims any liability for the use of this detail and for the architecture, design, engineering of workmanship of any project.

The project design professional determines, in its sole discretion, whether this detail or a functionally equivalent alternative is best suited for the project. Use of a functionally equivalent detail does not violate Tremco CPG UK's warranty.

These details are subject to change without notice. Please contact Tremco CPG UK to ensure you have the most recent version.



System  
**Roxsulation Pro**

Project  
**Standard Detail Drawing**

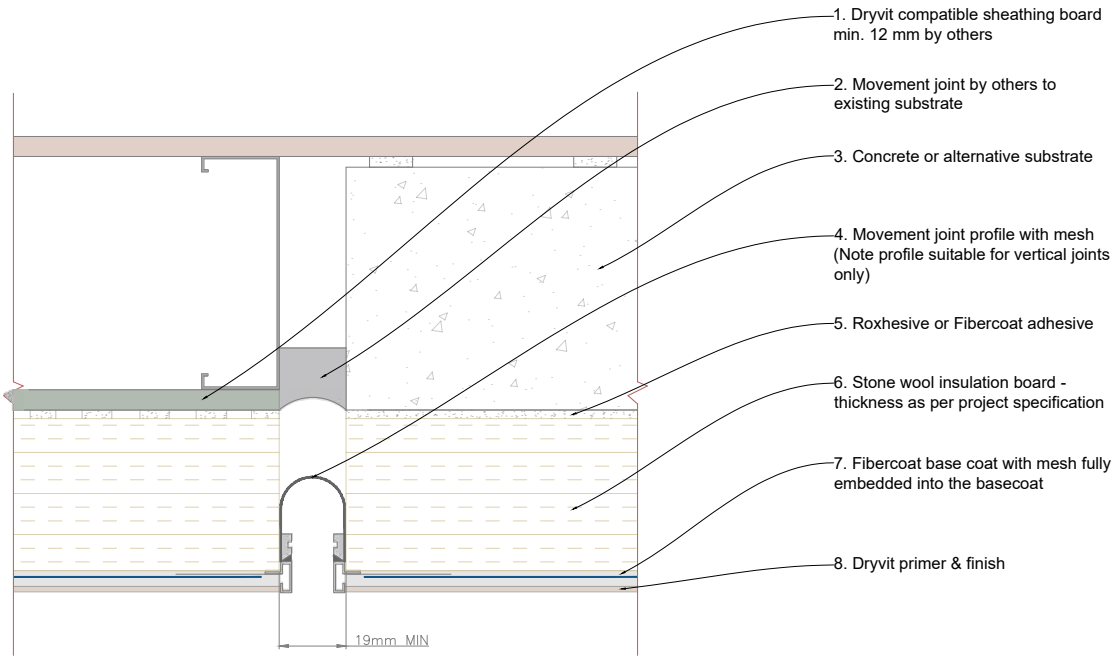
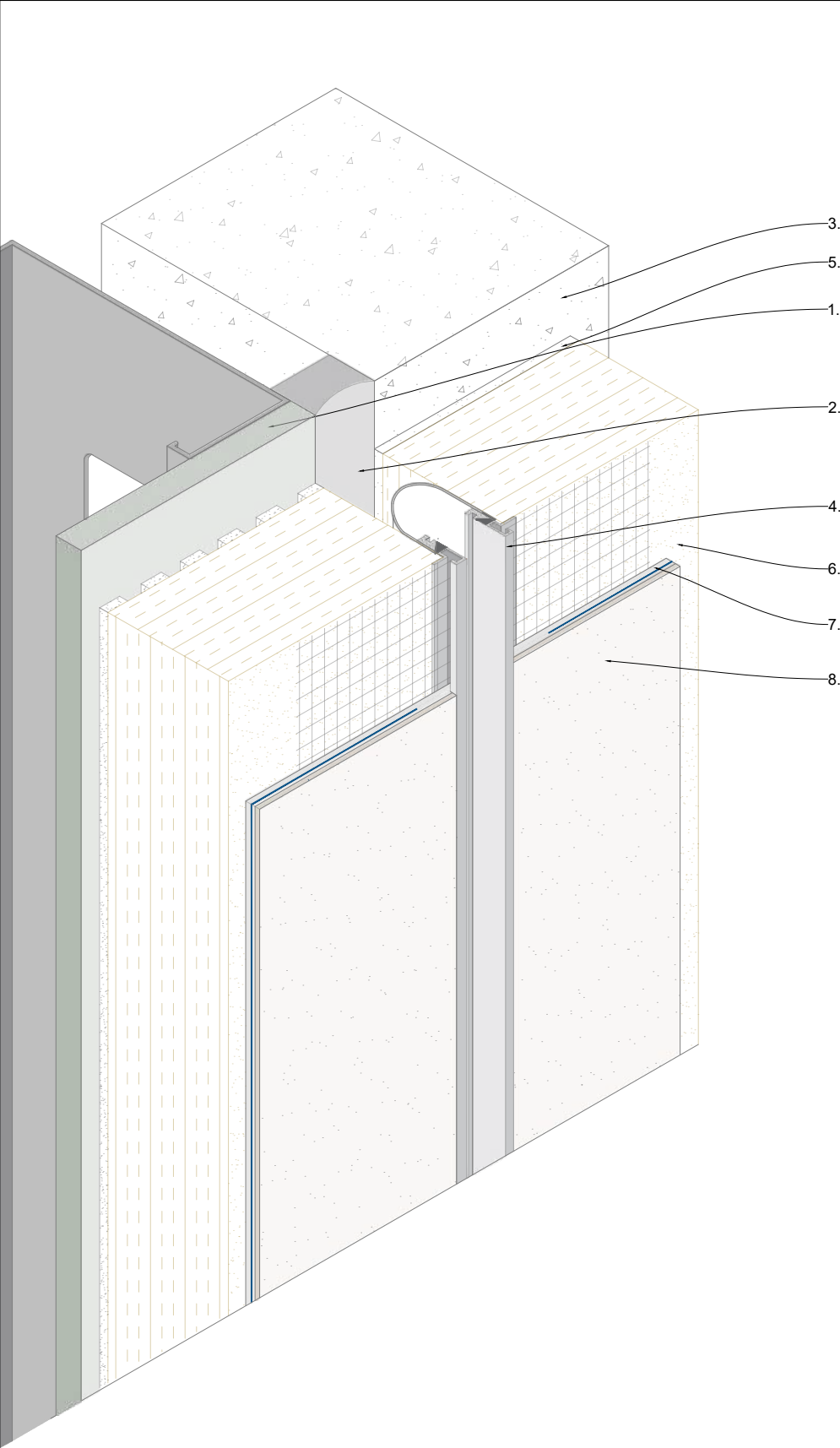
Title  
**Movement joint - Backer rod & seal**

|                         |                           |
|-------------------------|---------------------------|
| Date<br><b>Nov 2021</b> | Drg no<br><b>RPS-011b</b> |
|-------------------------|---------------------------|

|                     |                       |
|---------------------|-----------------------|
| Scale<br><b>NTS</b> | Drawn by<br><b>KM</b> |
|---------------------|-----------------------|



Tremco CPG UK Ltd,  
Coupland Road,  
Hindley Green,  
Wigan, Lancs. WN2 4HP  
[www.cpg-europe.com](http://www.cpg-europe.com)



Note:

Movement joints should be installed generally @ 23 m max centres and to follow any movement /expansion joint in the existing substrate, at any transition /change to the substrate and at party wall locations.

This profile is suitable for vertical applications only.

General Notes

The architecture, engineering and design of the project using the Dryvit products is the responsibility of the project's design professional. All systems must comply with National Building Regulations and Standards.

This detail is for general information and guidance only and Tremco CPG UK Ltd specifically disclaims any liability for the use of this detail and for the architecture, design, engineering of workmanship of any project.

The project design professional determines, in its sole discretion, whether this detail or a functionally equivalent alternative is best suited for the project. Use of a functionally equivalent detail does not violate Tremco CPG UK's warranty.

These details are subject to change without notice. Please contact Tremco CPG UK to ensure you have the most recent version.



System  
**Roxsulation Pro**

Project  
**Standard Detail Drawing**

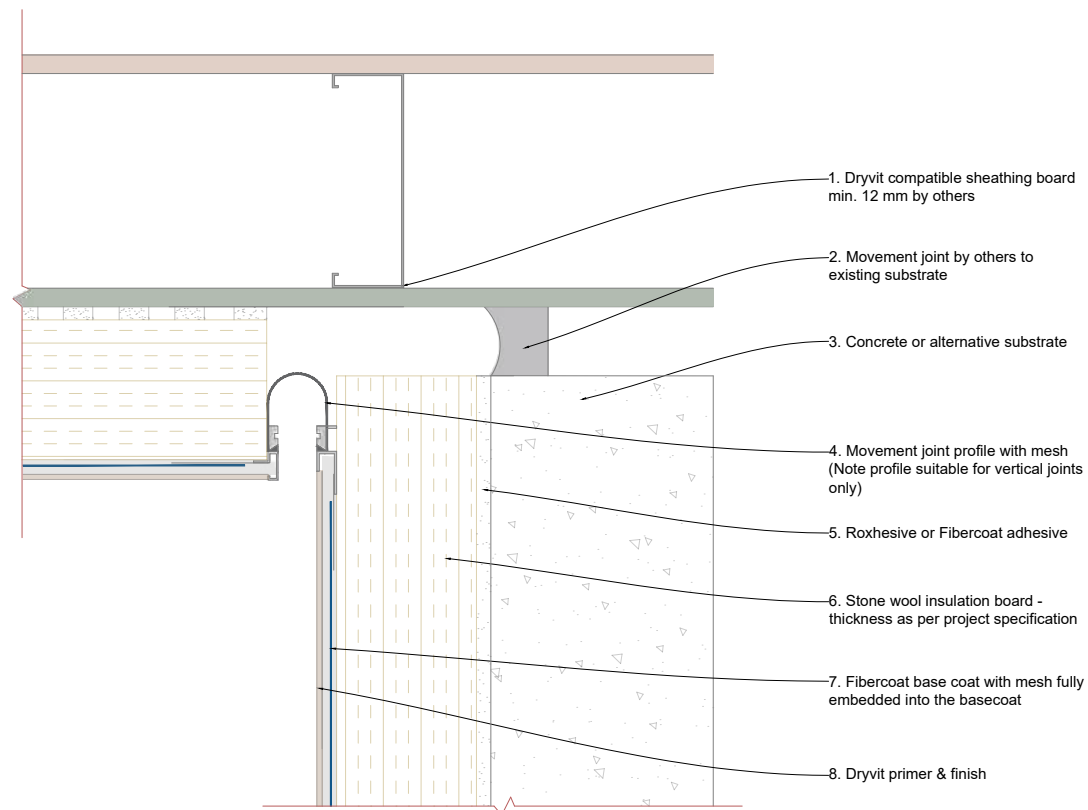
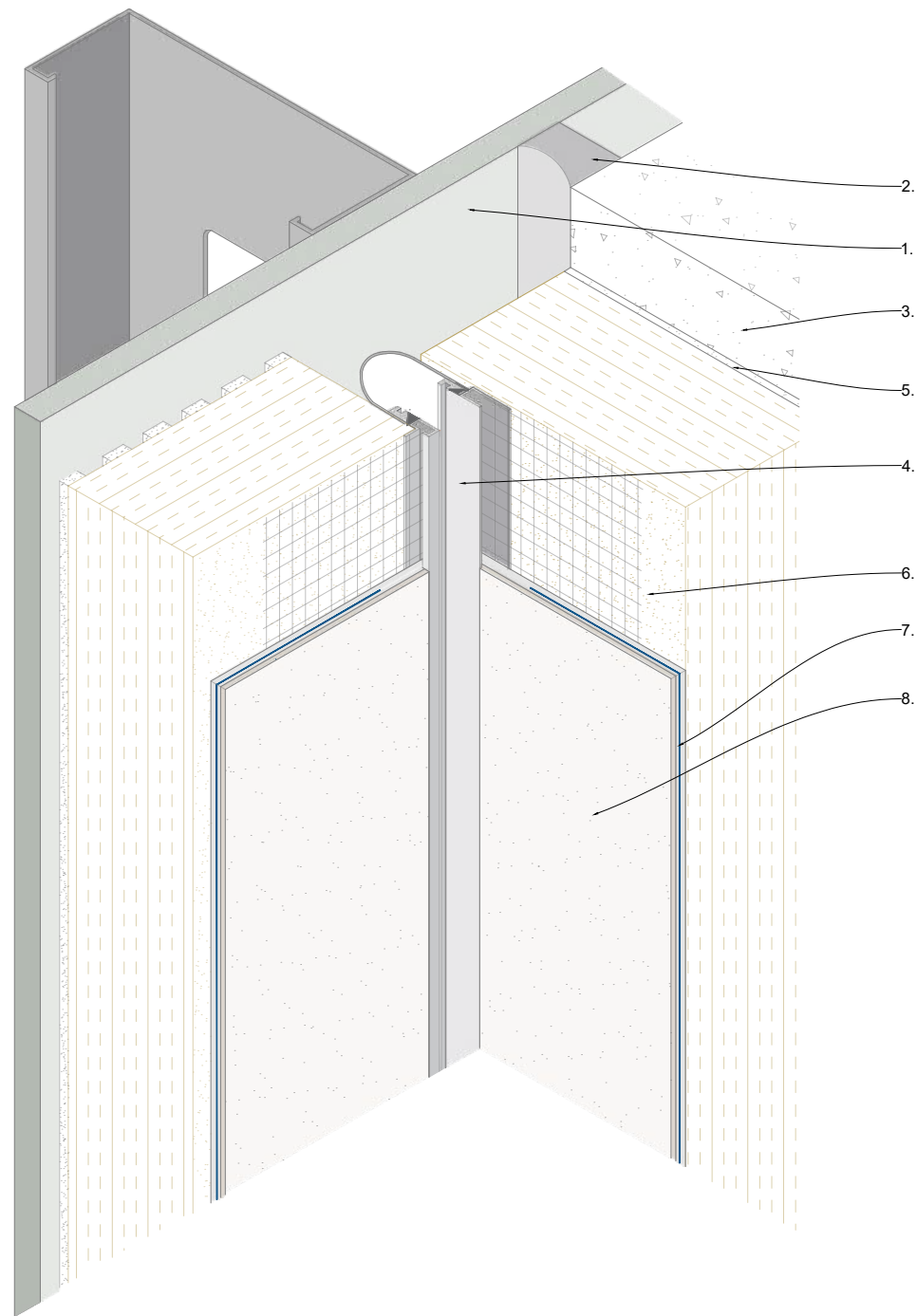
Title  
**Movement joint with Movement joint profile**

|                         |                           |
|-------------------------|---------------------------|
| Date<br><b>Nov 2021</b> | Drg no<br><b>RPS-011c</b> |
|-------------------------|---------------------------|

|                     |                       |
|---------------------|-----------------------|
| Scale<br><b>NTS</b> | Drawn by<br><b>KM</b> |
|---------------------|-----------------------|



Tremco CPG UK Ltd,  
Coupland Road,  
Hindley Green,  
Wigan, Lancs. WN2 4HP  
[www.cpg-europe.com](http://www.cpg-europe.com)



## General Notes

The architecture, engineering and design of the project using the Dryvit products is the responsibility of the project's design professional. All systems must comply with National Building Regulations and Standards.

This detail is for general information and guidance only and Tremco CPG UK Ltd specifically disclaims any liability for the use of this detail and for the architecture, design, engineering of workmanship of any project.

The project design professional determines, in its sole discretion, whether this detail or a functionally equivalent alternative is best suited for the project. Use of a functionally equivalent detail does not violate Tremco CPG UK's warranty.

These details are subject to change without notice. Please contact Tremco CPG UK to ensure you have the most recent version.



System

**Roxsulation Pro**

Project

**Standard Detail Drawing**

Title

**Internal Corner detail**

Date  
**Nov 2021**

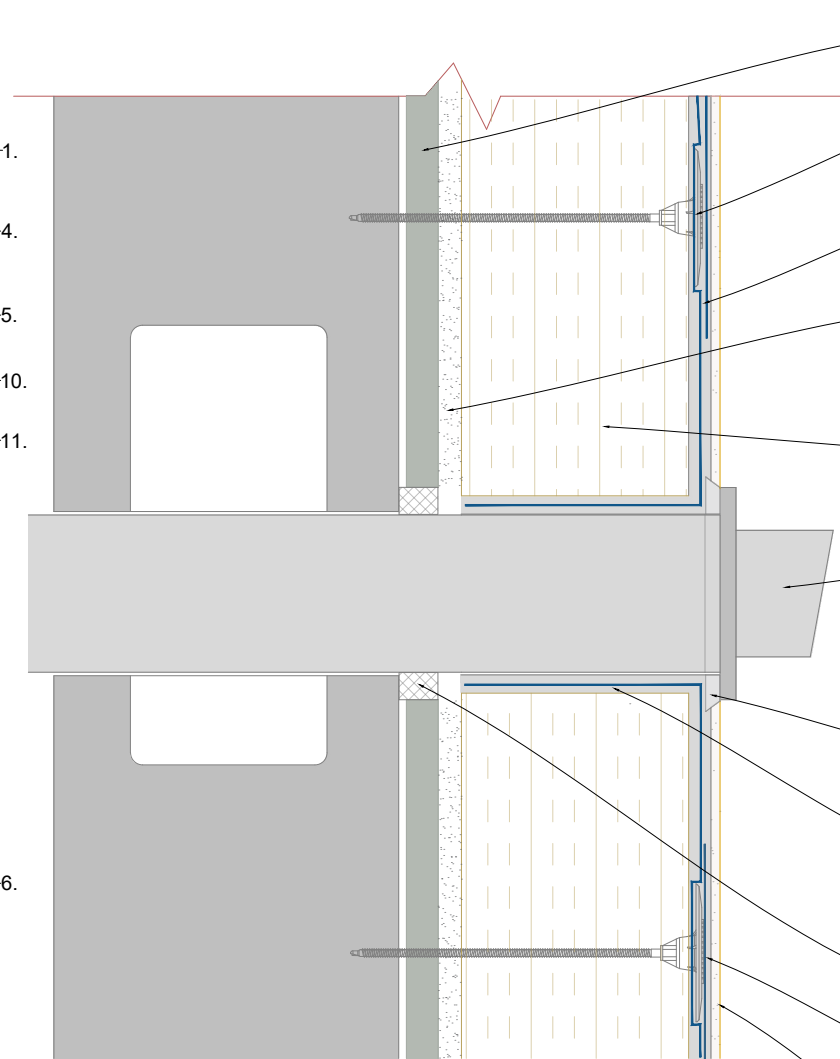
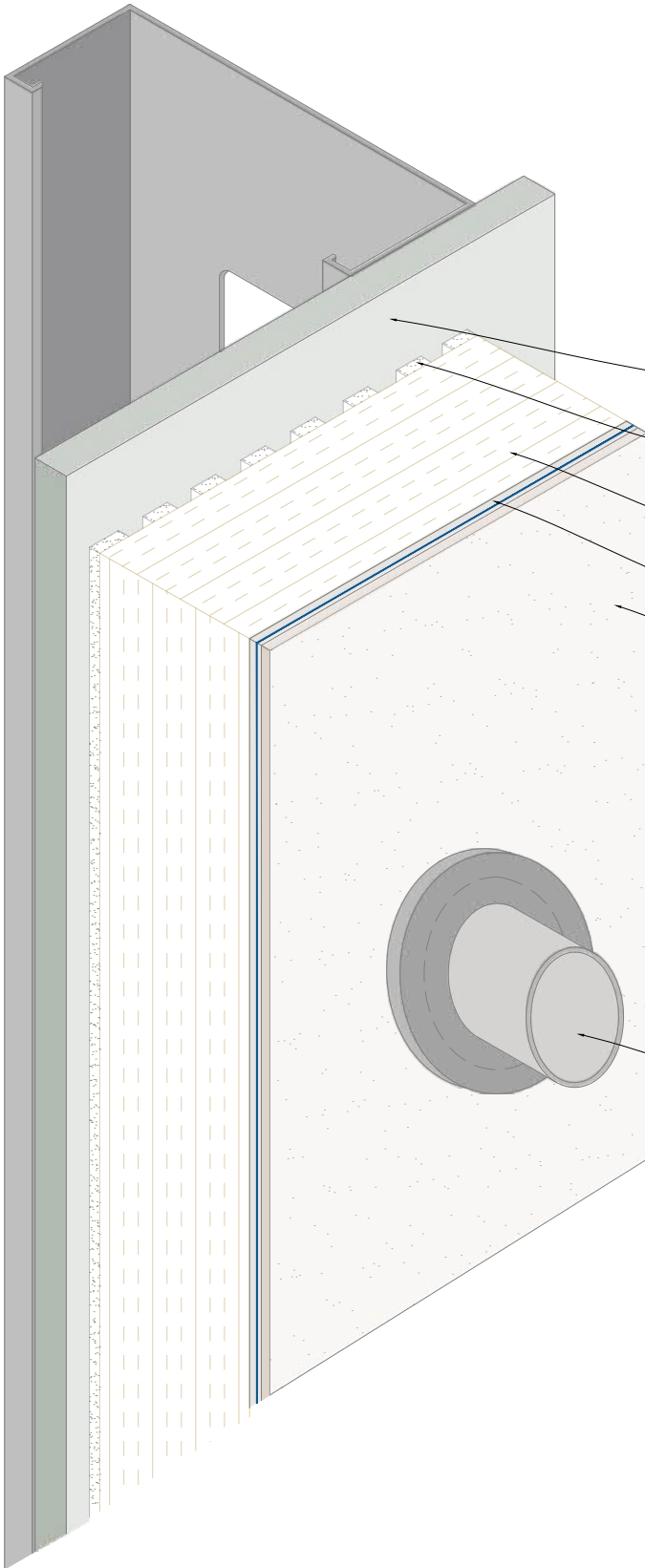
Drg no  
**RPS-012**

Scale  
**NTS**

Drawn by  
**KM**



Tremco CPG UK Ltd,  
Coupland Road,  
Hindley Green,  
Wigan, Lancs. WN2 4HP  
[www.cpg-europe.com](http://www.cpg-europe.com)



- 1. Dryvit compatible sheathing board min. 12 mm by others
- 2. Mechanical fixing through the first layer of basecoat & mesh
- 3. Mesh patches over mechanical fixings fully embedded into the basecoat
- 4. Roxhesive or Fibercoat adhesive applied in notched trowel method plus a solid band of adhesive applied around the circumference of the flue
- 5. Stone wool insulation board - thickness as per project specification
- 6. Existing flue & cover plate - Main contractor to ensure flue extension extends sufficiently beyond the finished face of the EWI system
- 7. Illbruck FA880 sealant applied around the circumference of the flue prior to application of finish
- 8. Fibercoat base coat with mesh returned into opening (corner bead optional for square penetrations)
- 9. Seal by others to existing substrate
- 10. Fibercoat base coat with mesh fully embedded into the basecoat
- 11. Dryvit primer & finish

General Notes

The architecture, engineering and design of the project using the Dryvit products is the responsibility of the project's design professional. All systems must comply with National Building Regulations and Standards.  
This detail is for general information and guidance only and Tremco CPG UK Ltd specifically disclaims any liability for the use of this detail and for the architecture, design, engineering of workmanship of any project.  
The project design professional determines, in its sole discretion, whether this detail or a functionally equivalent alternative is best suited for the project. Use of a functionally equivalent detail does not violate Tremco CPG UK's warranty.  
These details are subject to change without notice. Please contact Tremco CPG UK to ensure you have the most recent version.



System  
**Roxsulation Pro**

Project  
**Standard Detail Drawing**

Title  
**Flue detail**

Date  
**Nov 2021**

Drg no  
**RPS-013**

Scale  
**NTS**

Drawn by  
**KM**



Tremco CPG UK Ltd,  
Coupland Road,  
Hindley Green,  
Wigan, Lancs. WN2 4HP  
www.cpg-europe.com



**General Notes**

The architecture, engineering and design of the project using the Dryvit products is the responsibility of the project's design professional. All systems must comply with National Building Regulations and Standards.

This detail is for general information and guidance only and Tremco CPG UK Ltd specifically disclaims any liability for the use of this detail and for the architecture, design, engineering of workmanship of any project.

The project design professional determines, in its sole discretion, whether this detail or a functionally equivalent alternative is best suited for the project. Use of a functionally equivalent detail does not violate Tremco CPG UK's warranty.

These details are subject to change without notice. Please contact Tremco CPG UK to ensure you have the most recent version.



System  
**Roxsulation Pro**

Project  
**Standard Detail Drawing**

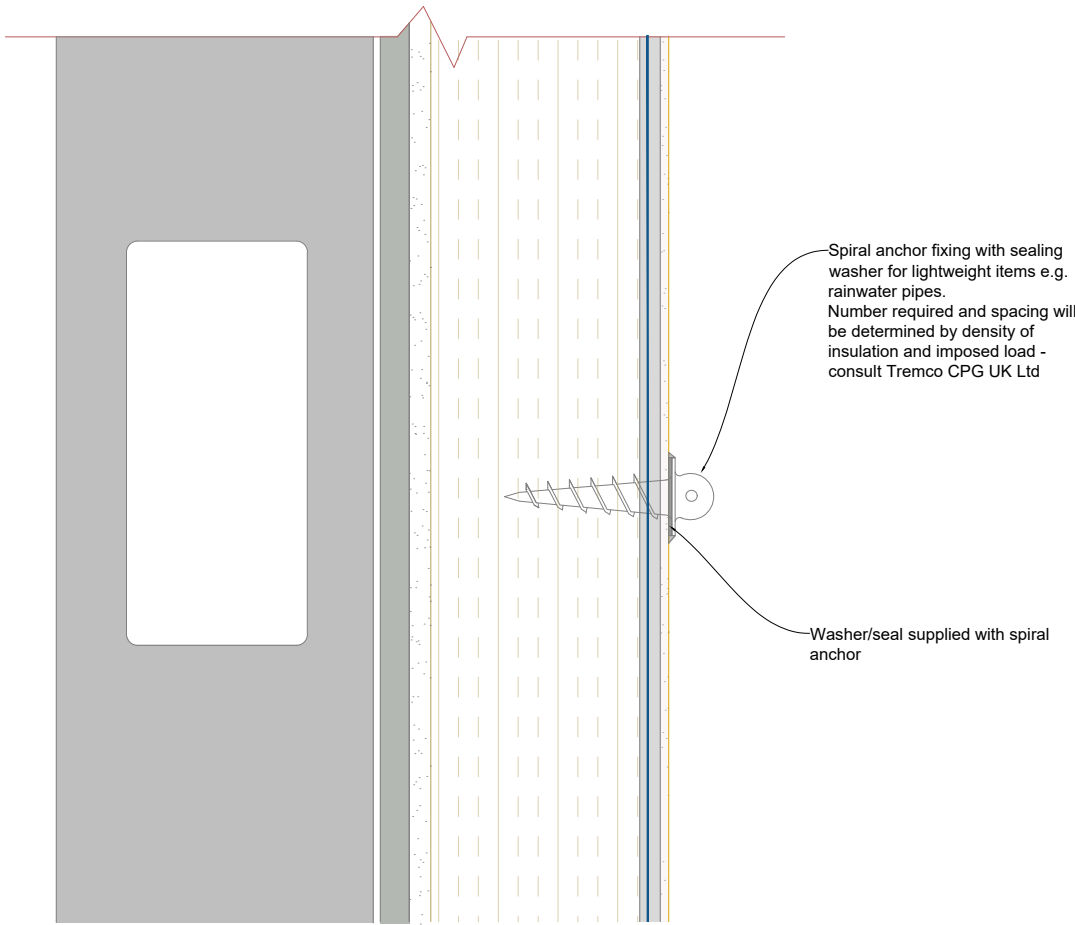
Title  
**Ancillary Fixings**

|                         |                          |
|-------------------------|--------------------------|
| Date<br><b>Nov 2021</b> | Drg no<br><b>RPS-014</b> |
|-------------------------|--------------------------|

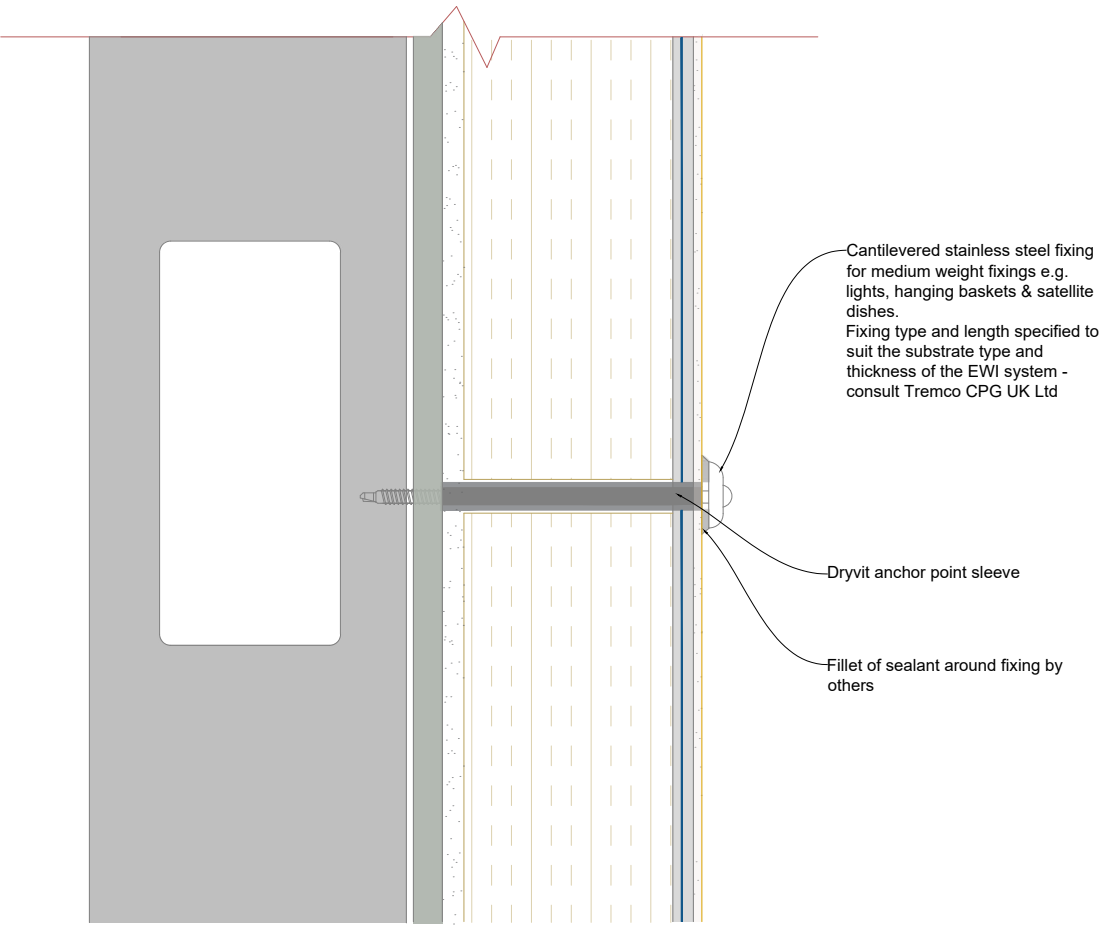
|                     |                       |
|---------------------|-----------------------|
| Scale<br><b>NTS</b> | Drawn by<br><b>KM</b> |
|---------------------|-----------------------|



Tremco CPG UK Ltd,  
Coupland Road,  
Hindley Green,  
Wigan, Lancs. WN2 4HP  
[www.cpg-europe.com](http://www.cpg-europe.com)

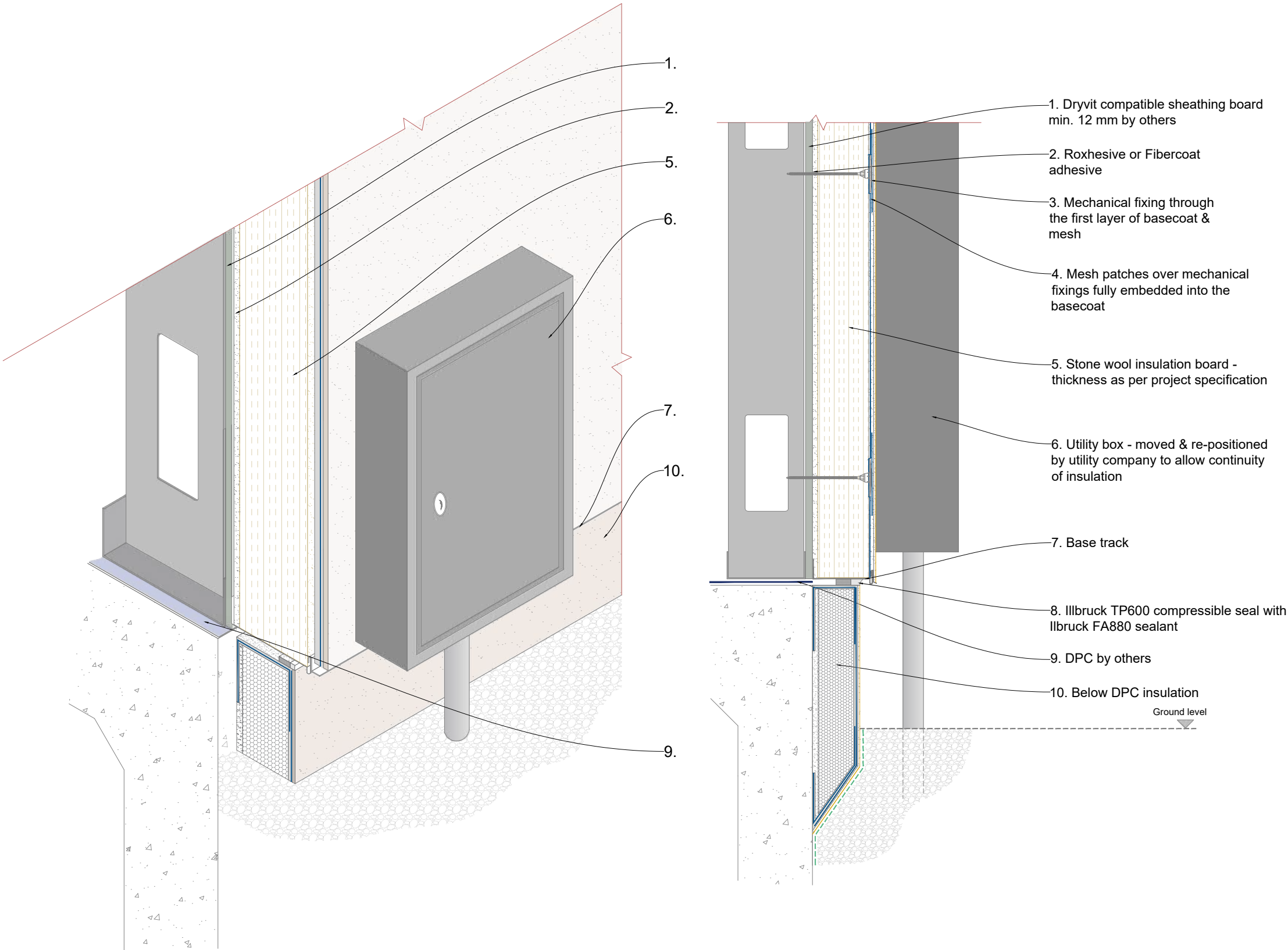


Spiral anchors for  
lightweight items



Thermally broken cantilevered  
fixings for medium weight items

**Note!**  
The owner of the utility box only is authorised to move the service box to allow installation of the EWI system. Under no circumstances should the movement of utility boxes be undertaken by the EWI installer.



General Notes

The architecture, engineering and design of the project using the Dryvit products is the responsibility of the project's design professional. All systems must comply with National Building Regulations and Standards.  
This detail is for general information and guidance only and Tremco CPG UK Ltd specifically disclaims any liability for the use of this detail and for the architecture, design, engineering or workmanship of any project.  
The project design professional determines, in its sole discretion, whether this detail or a functionally equivalent alternative is best suited for the project. Use of a functionally equivalent detail does not violate Tremco CPG UK's warranty.  
These details are subject to change without notice. Please contact Tremco CPG UK to ensure you have the most recent version.



System  
**Roxsulation Pro**

Project  
**Standard Detail Drawing**

Title  
**Utility /Service box**

Date  
**Nov 2021**

Drg no  
**RPS-015**

Scale  
**NTS**

Drawn by  
**KM**



Tremco CPG UK Ltd,  
Coupland Road,  
Hindley Green,  
Wigan, Lancs. WN2 4HP  
[www.cpg-europe.com](http://www.cpg-europe.com)